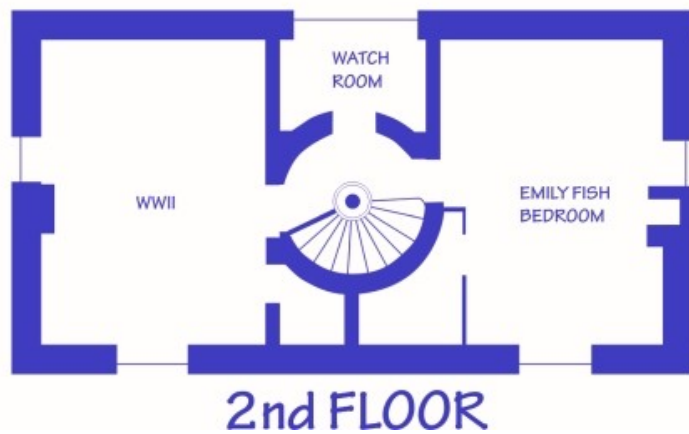
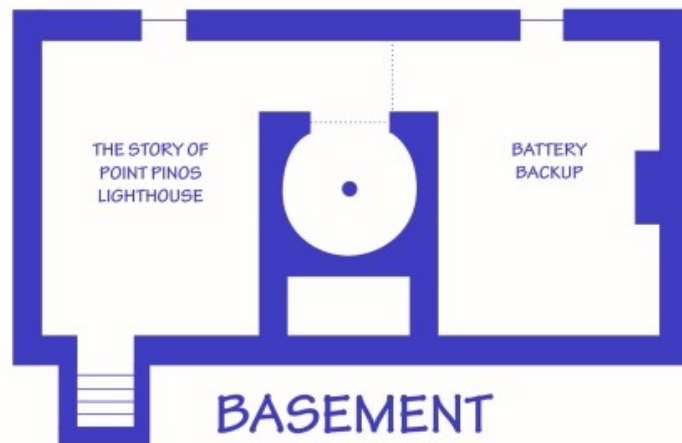
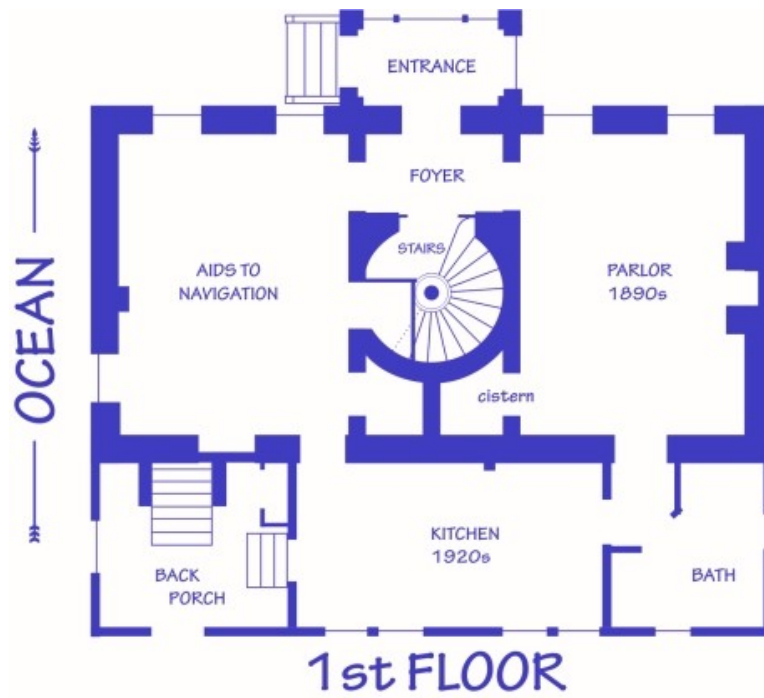


# Inside the Point Pinos Lighthouse



# Inside the Point Pinos Lighthouse



31 star  
Flag

Foghorn

Front  
Desk

Map



AIDS TO  
NAVIGATION

Eclipser

17 Miles



Lens

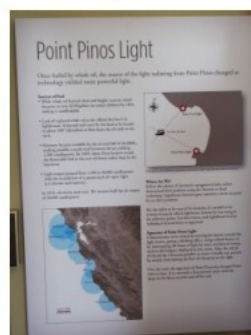
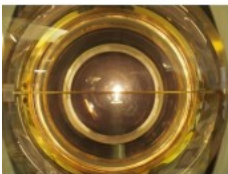


The Point Pinos Fresnel lens is the largest and weighs 2,000 pounds. It is a fixed lens with five and three-quarter inch diameter. It has a central lens that is one and three-quarter inch diameter and three and one-half inch diameter. The lens is four inches from the center of the reflector system.

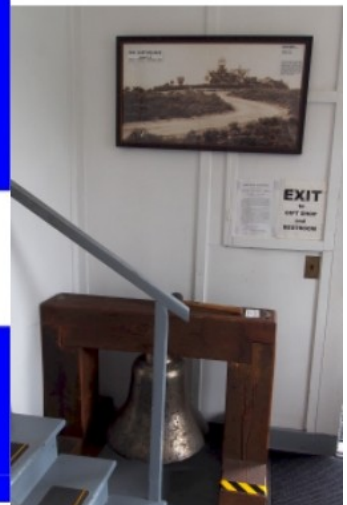
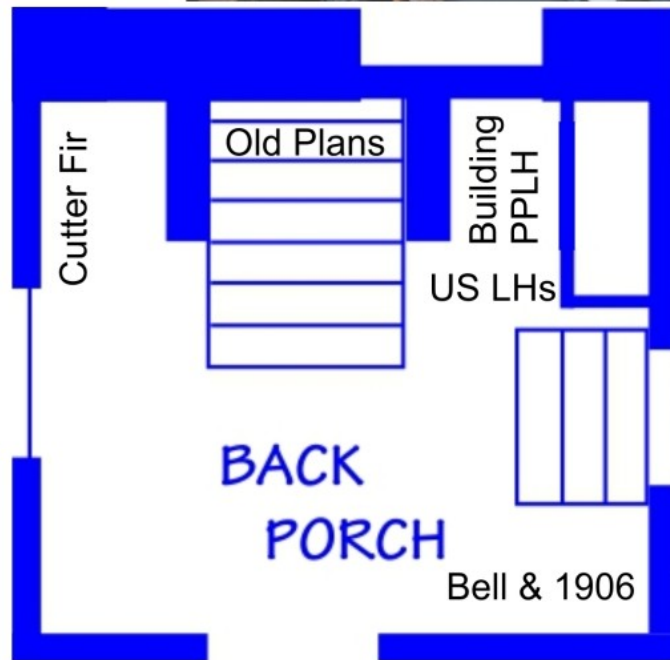
Fresnel

PP Light

Artifacts



# Inside the Point Pinos Lighthouse



# Inside the Point Pinos Lighthouse



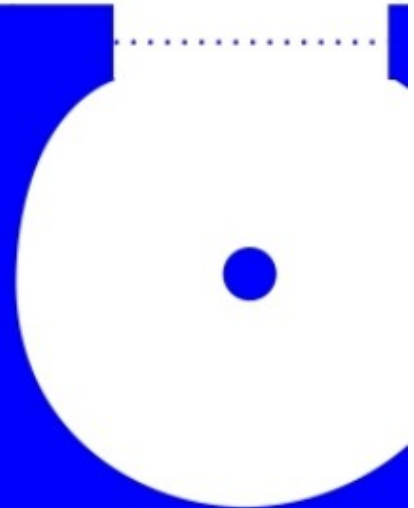
harbor  
buoy

Wrecks near PPLH

Backup  
Batteries

THE STORY OF  
POINT PINOS  
LIGHTHOUSE

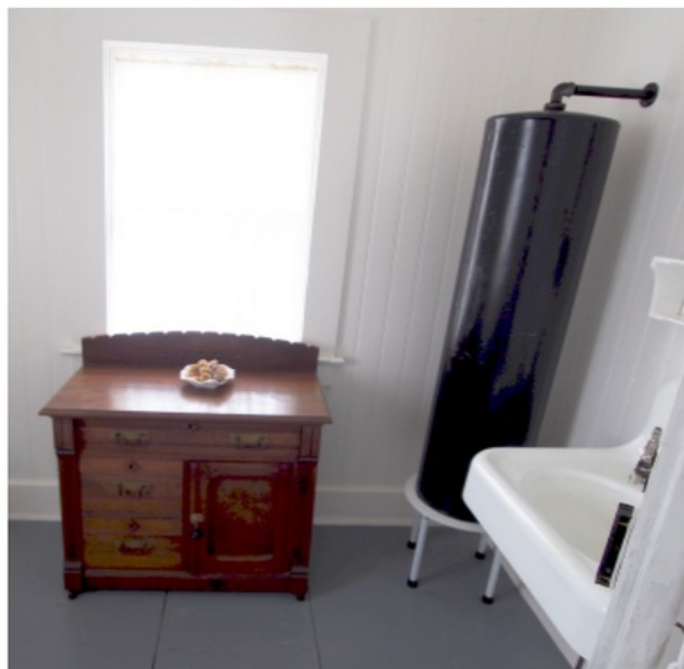
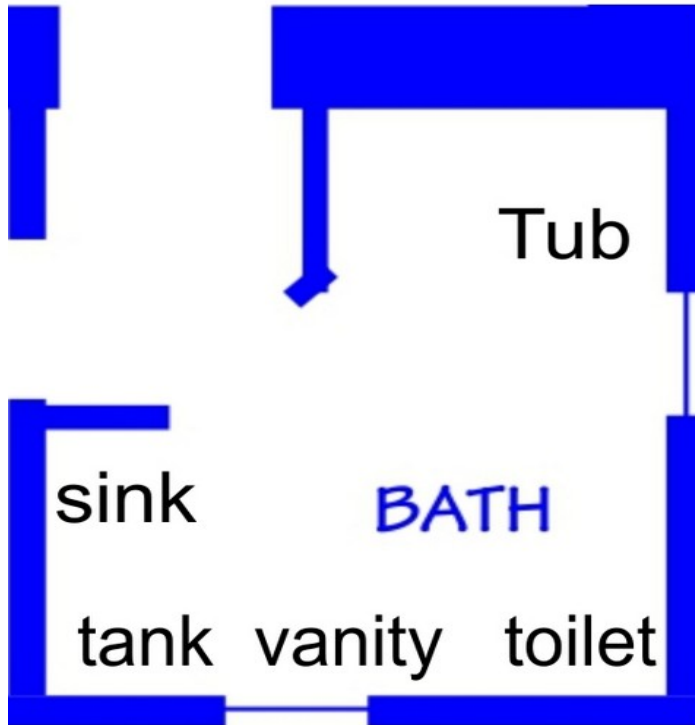
8' Video



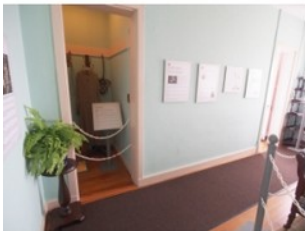
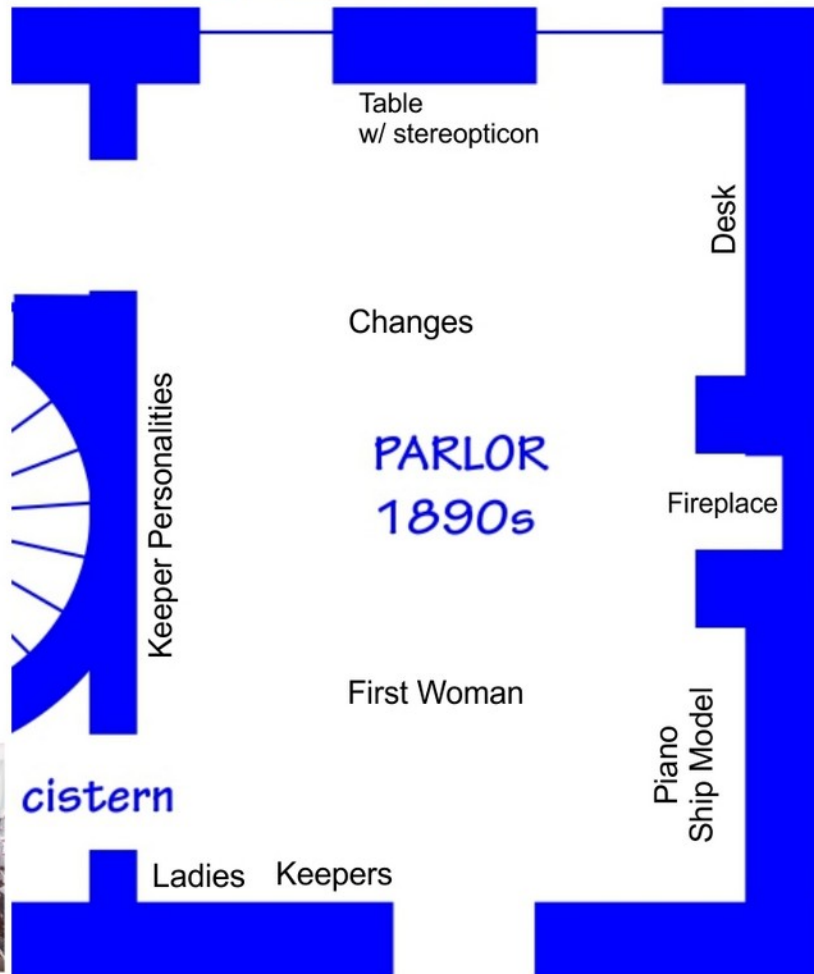
# Inside the Point Pinos Lighthouse



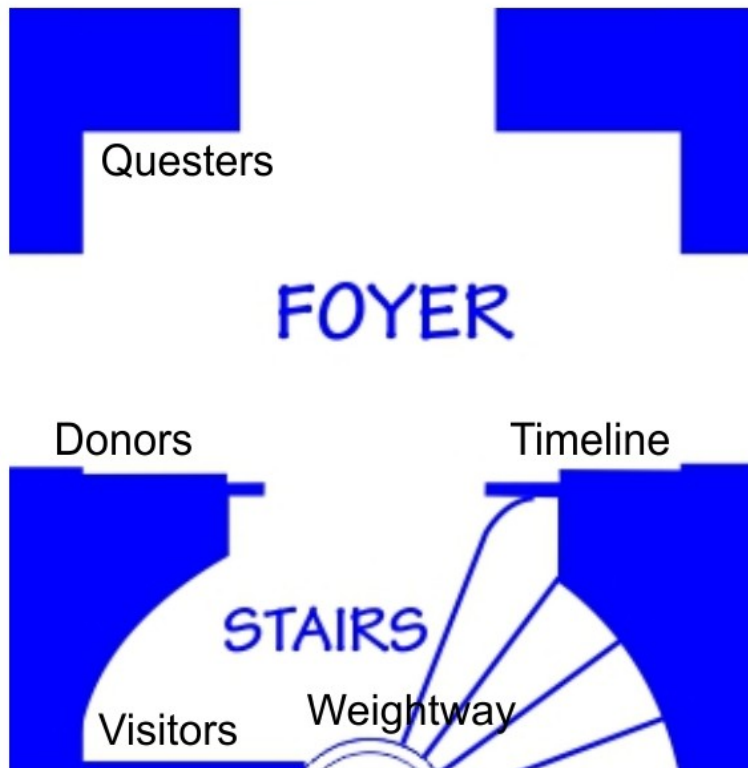
# Inside the Point Pinos Lighthouse



# Inside the Point Pinos Lighthouse

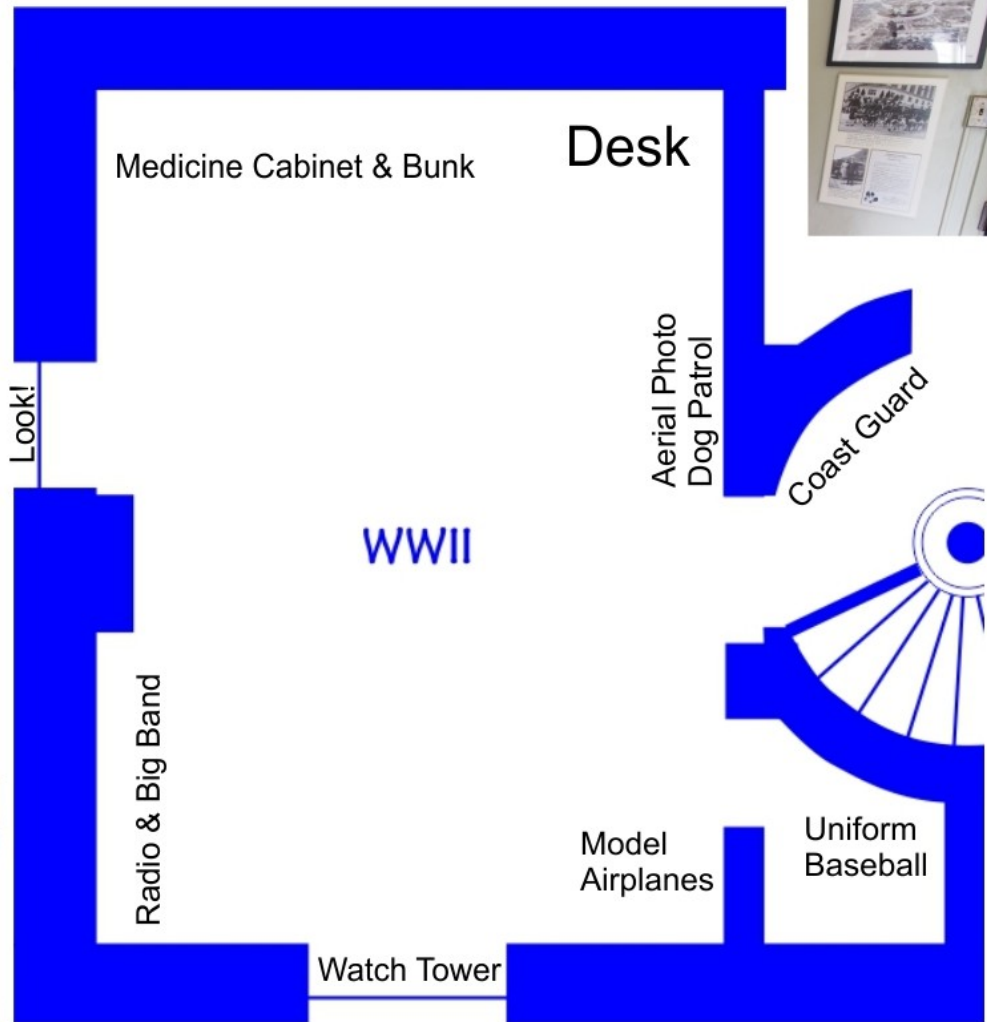
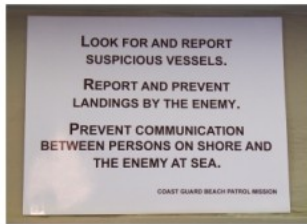


# Inside the Point Pinos Lighthouse





# Inside the Point Pinos Lighthouse



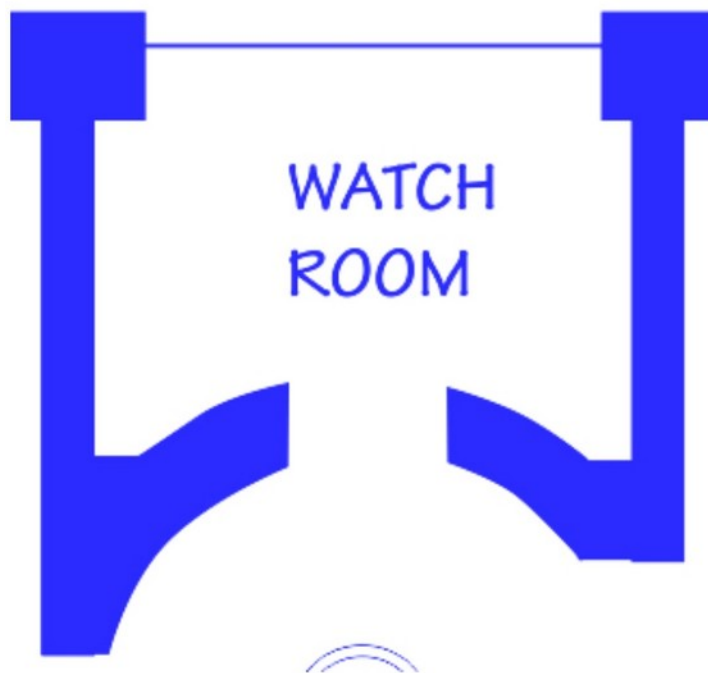
**WATCH TOWER**

Located south west of the lighthouse on what is now the golf course, this 1942 watch tower was over 40 feet tall.

It gave the Beach Patrol an unobstructed view of the southern approach to Monterey Bay.



# Inside the Point Pinos Lighthouse



"This morning at 4:30 am the schooner Silver Cloud went ashore on the sand beach two miles to the eastward of Monterey.

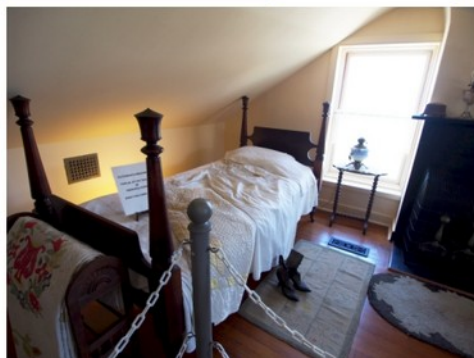
No anchor watch being kept all hands turned in.  
She being at the time fast to the steamer's buoy  
by some means unknown got adrift.  
.....vessel a total loss, partial insurance."

*September 24, 1878, Allen Luce, keeper*

"Wind fresh N.W.  
Foggy  
No vessels seen.  
Mrs. E. Fish, my successor, arrived at the station."

*June 29, 1893, Allen Luce, keeper*

# Inside the Point Pinos Lighthouse



# Inside the Point Pinos Lighthouse



LANTERN ROOM

