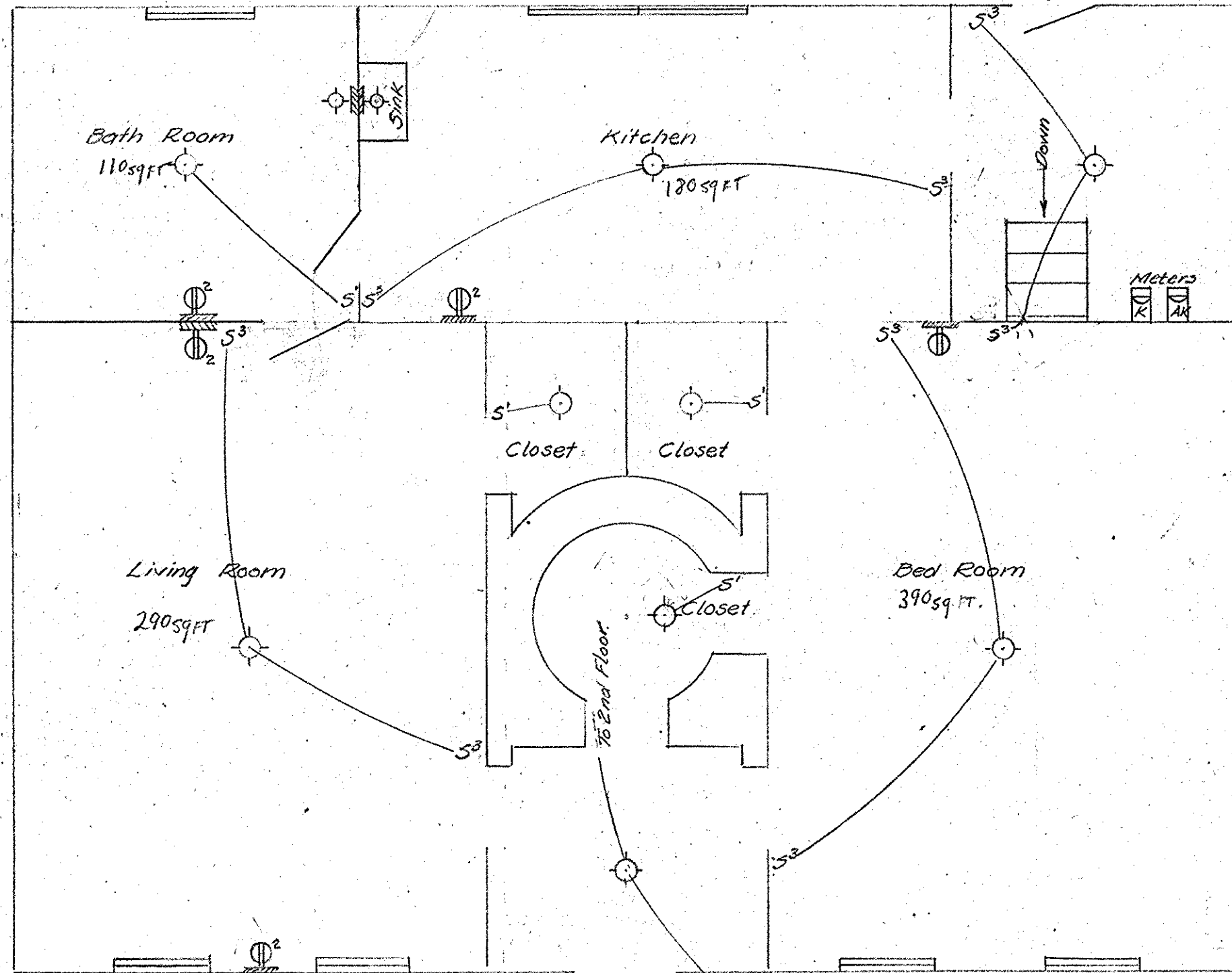
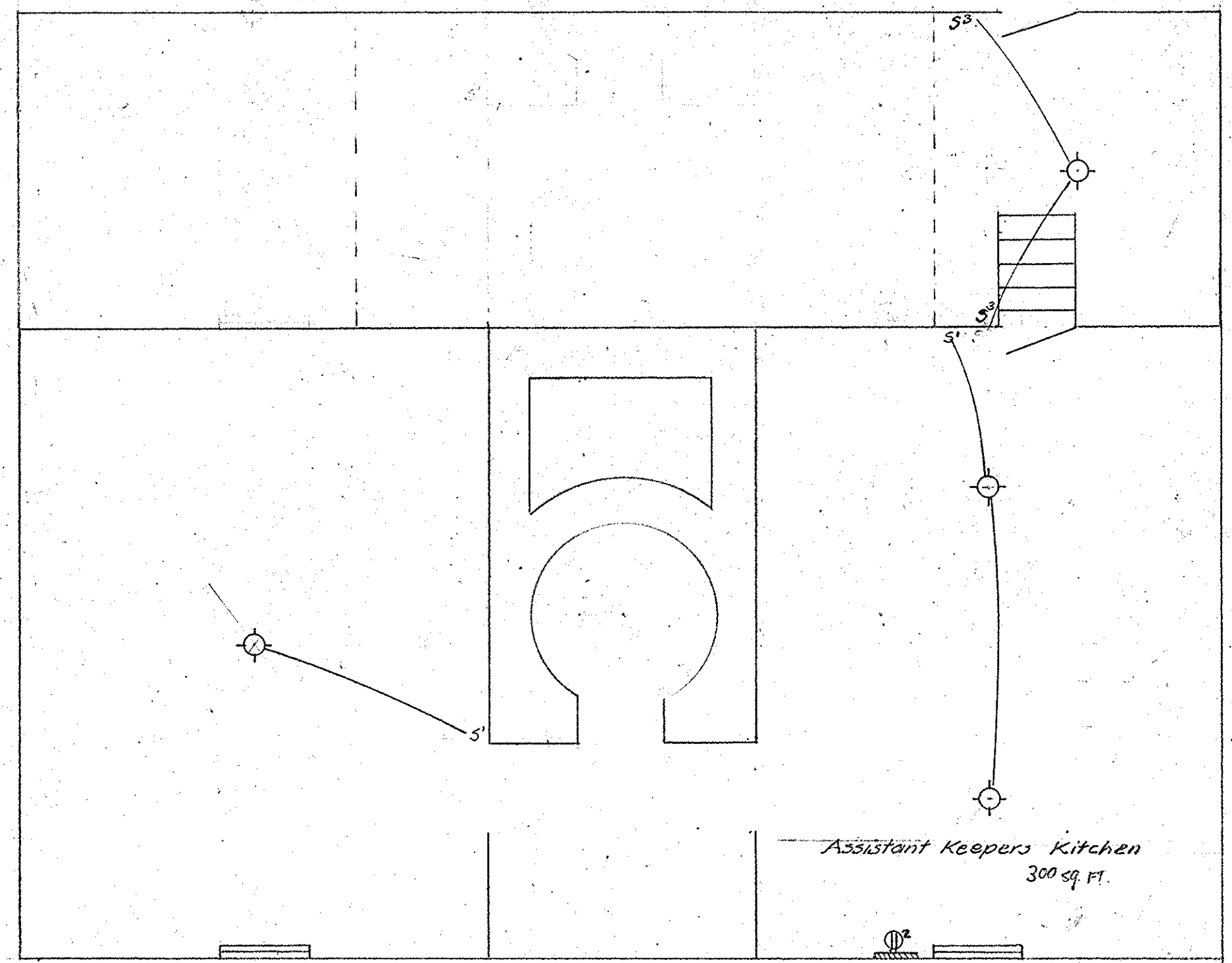


2ND FLOOR



1ST FLOOR

Porch Entrance



BASEMENT

PROPOSAL No. 110

OFFICE OF THE SUPT. OF LIGHTHOUSES  
EIGHTEENTH DISTRICT, SAN FRANCISCO, CAL.

POINT PINOS LIGHT STATION  
WIRING LAYOUT FOR QUARTERS

SCALE 3/4" = 1'-0"  
APPROVED 7-3-39

O. L. JENKINS  
ASST. SUPT.

H. W. RHODES  
SUPT. OF LIGHTHOUSES

DRAWN TRACED T.M.  
CHECKED O.L.J.

DATA WITH NO. 3638-21

29-11

FILE