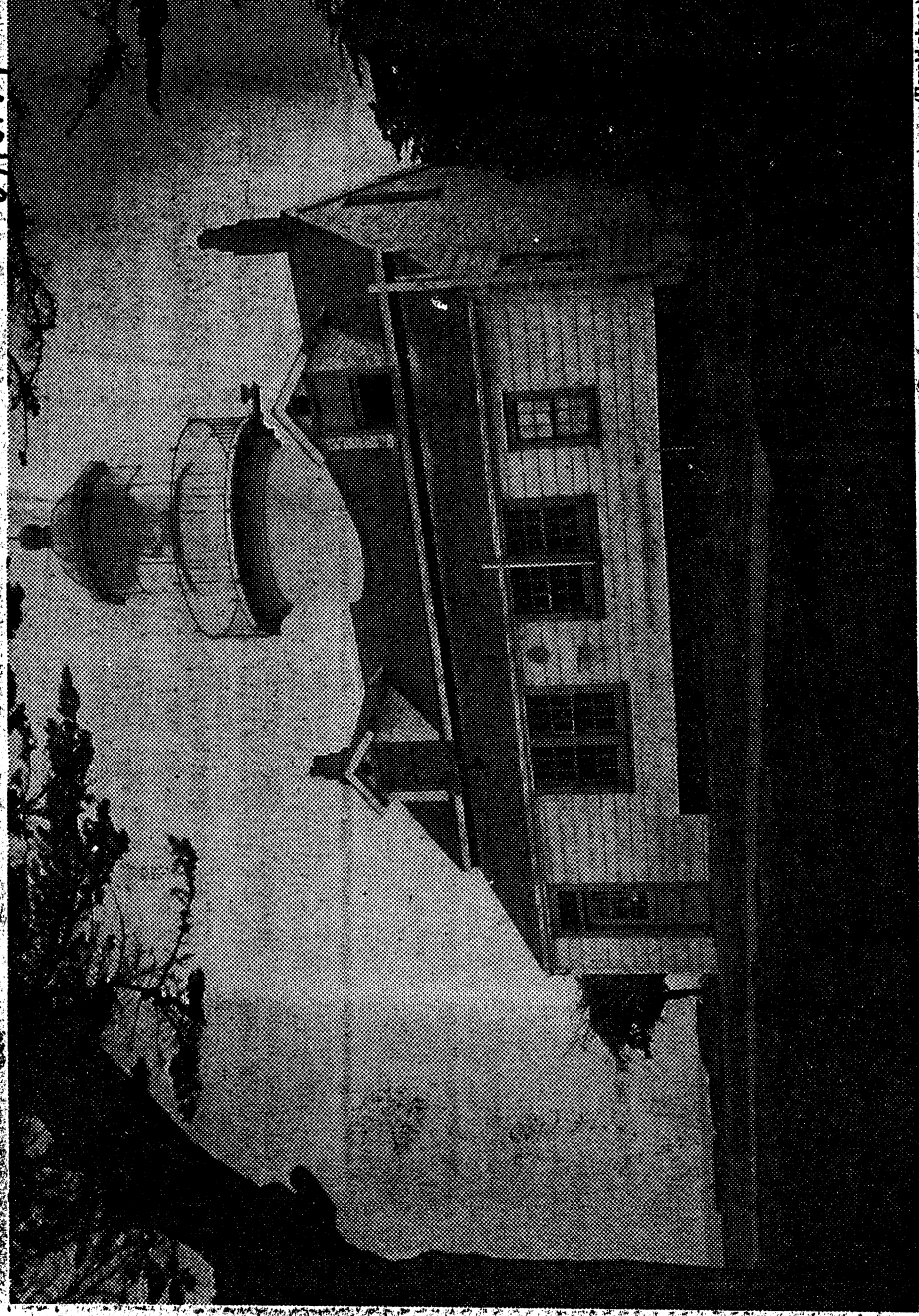


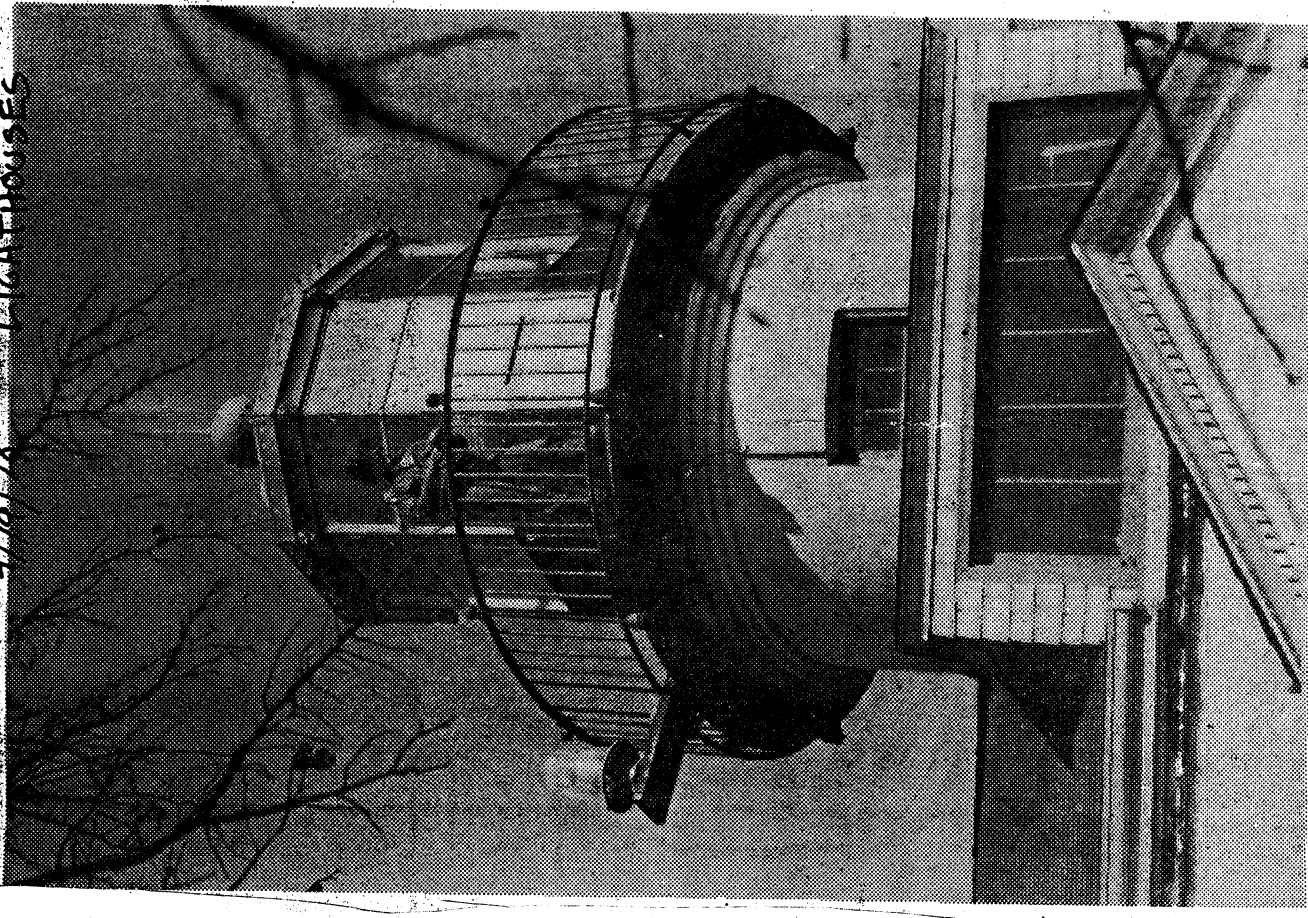
8/10/77



(Herald photo)

Historical Site

Point Pinos Lighthouse Station, the oldest operating lighthouse on the Pacific Coast, has been designated a national historical site by the National Park Service. The station, which went into service in 1855, was selected for both its historical and architectural significance. Designation as a historical site means that the lighthouse station will be included in the National Register of Historic Places, the federal index of the nation's cultural resources. The listing also will protect the site from any federal demolition efforts and make groups who wish to preserve it eligible for state grants.



(Herald photo)

Lighthouse Keeping

Pacific Grove city worker Michael Grubb tries to stay on top of things at Point Pinos Lighthouse, where an ongoing repair program includes scraping off old paint and repainting, wire brushing and treating some rusted metal on top and replacing old bolts. The city also is acquiring old furniture with the intention of setting up period rooms at the lighthouse, but is shying away from major expenditures because the lighthouse museum might be closed if the Jarvis-