

California Cultural and Historical Endowment Grant Application Face Sheet

Applicant Name:
(Organization or Public Agency) CITY OF PACIFIC GROVE

Applicant Address: 300 FOREST AVE.
PACIFIC GROVE, CA 93950

Public Contact
Regarding this Project: ROSS G. HUBBARD, CITY MANAGER

Public Contact Telephone: 831-648-3106
Facsimile: 831-657-9361
Email: MANAGER@CI.PG.CA.US

Non-profit Organization Federal
Employer Identification Number: _____

Name of Project: POINT PINOS LIGHTHOUSE RESTORATION PROJECT, PHASE I
(Short Title)

Project Amount: \$69,672
(Total Amount of Project)

Amount you are Requesting from \$34,835
CCHE:

Project Location: POINT PINOS, PACIFIC GROVE, MONTEREY COUNTY, CA
(indicate exact address,
City and County)

Anticipated Project Start Date: 7-15-04
(if you have already initiated your project, indicate that date)

Anticipated Completion Date: 5-01-04

Location Latitude and Longitude: _____

Website Address (if applicable) _____

Part One-CCHE Face Sheet

Acknowledgement

The CCHE grant applicant signing below declares the following:

The applicant understands that by submitting this CCHE Grant Application, that he/she is indicating that the information submitted therein is true and accurate to the best of their ability and that the applicant waives any and all rights to privacy and confidentiality of the material submitted.

The applicant also understands that if any part of the information in the CCHE Grant Application is found incorrect, inaccurate or if there is a change in the information provided in the CCHE Grant Application after it is submitted, that this information will be made known to CCHE in writing as soon as possible.

Signed:

Date:

Mat Ryanwood for

09/30/04

Print Name: ROSS G. HUBBARD

Title: CITY MANAGER

Part One -- Checklist and Acknowledgement Form

Page One of Two

Checklist and Acknowledgment Form

NOTE: A SIGNED COPY OF THIS FORM MUST BE INCLUDED WITH YOUR CCHE GRANT APPLICATION. AFTER YOU HAVE DETERMINED THAT YOU HAVE INCLUDED ALL OF THE INFORMATION LISTED ON THIS CHECKLIST, PLEASE DOUBLE CHECK THE INFORMATION BY INITIALING AFTER EACH ITEM REQUESTED, SIGN AND DATE IT.

Item Initial

PART ONE OF CCHE GRANT APPLICATION CONSISTING OF:

- | | | |
|----|---|-----------|
| 1. | CCHE Face Sheet (2 pages) | <u>NR</u> |
| 2. | Checklist and Acknowledgment Form (2 pages) | <u>NR</u> |

PART TWO OF CCHE GRANT APPLICATION CONSISTING OF:

Answers to Questions One-Six
(each question must follow page/space allocation)

- | | | |
|-------------|--|-----------|
| Question 1: | Project Description and Project Goals | <u>NR</u> |
| Question 2: | Project Audience and Needs Assessment | <u>NR</u> |
| Question 3: | CCHE Priorities | <u>NR</u> |
| Question 4: | Project Maintenance and Public Accessibility | <u>NR</u> |
| Question 5: | Tasks, Budget and Matching Requirement | <u>NR</u> |
| Question 6: | Project Team and Supporting Documents | <u>NR</u> |

PART THREE OF CCHE GRANT APPLICATION CONSISTING OF:

Attachments to the CCHE Grant Application

- | | | |
|---------------|--|-----------|
| Attachment 1: | Visual Description of Proposed Project | <u>NR</u> |
| Attachment 2: | IRS Determination Letter* | --- |
| Attachment 3: | Non-Profit Organization by-laws* | --- |
| Attachment 4: | Non-Profit Organization Articles of
Incorporation* | --- |
| Attachment 5: | IRS Form 990 or 990EZ or 1023* | --- |
| Attachment 6: | Non-Profit Organization's Board of
Directors, staff and volunteers* | --- |
| Attachment 7: | Copy of Resolution | <u>NR</u> |

(*non-profit organizations only)

Part One-Checklist and Acknowledgement Form

Page Two of Two Brief Project Description: (please use the space provided below)

The Point Pinos Lighthouse Restoration Project, Phase I, is the first of multiple phases of necessary repairs and restoration of the Point Pinos Lighthouse. Phase I focuses on emergency roof repairs and widening of the existing pathway to meet ADA accessibility standards, providing access to the lighthouse. Repairs are necessary to prevent further deterioration of the lighthouse. A detailed needs assessment is included in the Question 2 section of this packet.

The City of Pacific Grove is requesting matching funds in the amount of \$34,836 to finance Phase I of the project to restore the Point Pinos Lighthouse. The entire project cost is \$69,672. Lighthouses by nature, are exposed to harsh marine environments and coastal storms that accelerate deterioration. Assistance is needed from the California Cultural and Historical Endowment (CCHE) to support the Point Pinos Lighthouse Restoration Project, Phase I. The lighthouse and its volunteer-driven program has received minimal recognition, and no state funding. Support of this project from the state is timely as we look forward to the project's completion in time for the Point Pinos Sesquicentennial Celebration, which will be held in February 1, 2005.

CCHE Use Only:

Department Reference No.: _____

Bond: _____

Budget Year: _____

Award Date: _____

Type of Award: _____

Project Type: _____

Question One: Project Description and Project Goals

Project Description

The Point Pinos Lighthouse Restoration Project, Phase I, is the first of multiple phases of necessary repairs and restoration of the Point Pinos Lighthouse. Phase I focuses on emergency roof repairs and widening of the existing pathway to meet ADA accessibility standards, providing access to the lighthouse. Repairs are necessary to prevent further deterioration of the lighthouse. A detailed needs assessment is included in the Question 2 section of this packet.

The Point Pinos Lighthouse has been on the National Register of Historic Places since July 1977. Since 1855, the lighthouse has been an integral part of the history of California, Pacific Grove, the Monterey Peninsula, the U.S. military, and the U.S. Coast Guard. On February 1, 1855, the Point Pinos Lighthouse began operation, the second lighthouse to be lit on the West Coast (after the lighthouse at Alcatraz Island). The lighthouse is also the first to have a woman as a principal keeper. Today, the Point Pinos Lighthouse is the oldest continuously-operating lighthouse on the West Coast. Point Pinos Lighthouse has been administered and operated by the U.S. Lighthouse Service from 1855 to 1939, and the U.S. Coast Guard from 1939 until today. While operation of the light has, and will be continually maintained by the U.S. Coast Guard for navigation purposes, the City of Pacific Grove has maintained building operations, exhibits, events, and interpretive tours at the lighthouse since December 1967. This was made possible through an agreement between the City and the U.S. Coast Guard to open the lighthouse to the public as a museum. On October 12, 2004, it is expected that the U.S. Coast Guard, through the U.S. General Services Administration, will sign the deed transferring the Point Pinos Lighthouse land to the City of Pacific Grove.

In a report by Glenn D. Simpson, Supervisory Exhibit Specialist of the National Park Service, major reconstruction, and restoration of the Point Pinos Lighthouse structure is necessary to prevent further deterioration of the lighthouse. The final report from the National Park Service is expected to be released on October 15, 2004. Data from the preliminary report sufficiently illustrates and outlines the need for restoration, which is detailed further in this grant application.

The City of Pacific Grove's Museum of Natural History provides support to exhibits, building maintenance, events, and tours at Point Pinos Lighthouse. The success of the interpretive tours is made possible by the dedicated volunteers and community support. Volunteer docents spend thousands of hours each providing tours of the lighthouse. There are over 40,000 visitors to the lighthouse each year. The community-supported lighthouse is open for tours from 11:30 a.m. to 5 p.m. daily during the summer, and from 1 p.m. to 4 p.m. Thursdays through Sundays during winter, spring, and fall. The suggested donation is \$2 for adults and \$1 for youth. Implementation of the suggested donation began in August 2003 as a result of the increased need for funding.

As the oldest continuously operating lighthouse on the West Coast, Point Pinos Lighthouse is a unique historical structure unlike any other in the state and in the nation. The uniqueness of the lighthouse is recognized through interpretive tours and exhibits. The interpretive tours and exhibits at the lighthouse showcase aspects of California's history which cannot be replicated elsewhere. The tours and exhibits emphasize key aspects of the lighthouse in California's history, including:

- Historical Significance: The lighthouse continues to operate with the original Fresnel lens in the original building; hence it is the oldest standing lighthouse structure on the West Coast and the oldest continuously-operating lighthouse.
- Call for Construction of Lighthouses: California legally became a territory of the United States in 1848 at the end of the war with Mexico, and the United States began the process of constructing lighthouses on its coast. The birth of lighthouses on California's coast is explained, including Congress' authorization of the construction of the first eight lighthouses on the West Coast in 1850 and the Gold Rush.
- Geographical Placement of the Lighthouse: Emphasizes key aspects of the decision to build a lighthouse at Point Pinos. This includes: proximity to Monterey (only customs house, capital of Alta California during the Mexican era, one of three harbors safe from winter storms) and political factors (Monterey as Headquarters of the 10th Military Department of the United States)
- Difference in Lenses: Exhibits explain how the beacon works, and different types of lenses. Point Pinos Lighthouse's lens is the oldest Fresnel lens on the West Coast, and is now fully-automated, shining twenty-four hours a day.
- World War II?
- Emily Fish, Principal Keeper (1893-1914): Descriptions of the life of the legendary Emily Fish, who became principal lighthouse keeper at age 50. Volunteer docent Roo Hornandy dresses up in full costume, portraying Emily Fish almost every Saturday and Sunday. Describes challenges that Emily Fish encountered as a woman and as a principal keeper.

The City of Pacific Grove is requesting matching funds in the amount of \$34,836 to finance Phase I of the project to restore the Point Pinos Lighthouse. The entire project cost is \$69,672. Lighthouses by nature, are exposed to harsh marine environments and coastal storms that accelerate deterioration. Assistance is needed from the California Cultural and Historical Endowment (CCHE) to support the Point Pinos Lighthouse Restoration Project, Phase I. The lighthouse and its volunteer-driven program has received minimal recognition, and no state funding. Support of this project from the state is timely as we look forward to the project's completion in time for the Point Pinos Sesquicentennial Celebration, which will be held in February 1, 2005.

Project Goals

Project Goals for the Point Pinos Lighthouse Restoration Project, Phase I include:

- Reroof the Point Pinos Lighthouse, including: replacing fasteners, felt and sheathing repair and flashing. Existing corroded steel to be replaced with copper.
- Preventing further water damage and intrusion to the lighthouse
- Continue the process of weatherproofing the lighthouse and make progress towards areas that need immediate attention.
- Expand the existing pathway to meet ADA accessibility standards to improve access to the disabled.
- Complete repairs that are most urgent, and continue to build the framework for Phases II and III of the project.

Question Two: Project Audience and Project Need

Project Audience

The Point Pinos Lighthouse has attracted several audiences. They include locals, those visiting the Monterey Peninsula, and tourists from around the country. A large number of visitors to the lighthouse are lighthouse aficionados. Many lighthouse and maritime enthusiasts and heritage tourism visitors travel around the globe to visit magnificent structures such as the Point Pinos Lighthouse.

The primary target audience for lighthouse visitors is those who visit the Monterey Peninsula each year. Visitors and potential visitors to the Peninsula are informed of the Point Pinos Lighthouse tours and programs through the following means:

- Brochures and information about the Point Pinos Lighthouse advertised and displayed at the Monterey Visitor Information Center, Pacific Grove Museum of Natural History, Pacific Grove Visitor Information Center, Point Sur Lightstation Visitor Center, Pacific Grove Municipal Golf Links, and Pacific Grove City Hall.
- Information and advertisements for the Point Pinos Lighthouse on the City's web site (<http://www.ci.pacific-grove.ca.us/lighthouse>), along with exhibit information on the web site of the Pacific Grove Museum of Natural History (<http://www.pgmuseum.org>)
- Program and exhibit information listed weekly in the *Monterey County Weekly*, *Monterey County Herald*, and other local publications.

Volunteers and City staff are developing an interactive video tour allowing ADA accessibility to lighthouse visitors. Those who can only access the lighthouse by wheelchair can access the lighthouse through the back door of the Point Pinos Lighthouse. Lighthouses across California and the United States are often difficult to access by wheelchair. We intend to assist visitors in accessing this historical treasure by publicizing the 'interactive video tour' in brochures and lighthouse publications. Specifically, widening of the pathway to the lighthouse to ADA accessibility standards will allow increased access to the lighthouse grounds.

- Point Pinos Lighthouse brochures at the Monterey Visitor Information Center, where over ___ visitors stop yearly for information about attractions on the Monterey Peninsula.

Project Need

The Point Pinos Lighthouse Restoration Project, Phase I, restoration of the lighthouse focus on two core aspects of the site: the roof and addition of an ADA compliant pathway.

Restoration of the Point Pinos Lighthouse in the near future is essential to ensure the continued preservation of the 149-year old lighthouse. Many essential components of the building are deteriorating, and a continued neglect of the building's exterior may result in irreplaceable damage to the historic structure. Phase I of the restoration project focuses on replacement of the roof. As the oldest continuously-operating lighthouse on the West Coast, there is an immediate need for restoration of the structure. Glenn D. Simpson, Supervisory Exhibit Specialist with the National Park Service, has provided technical assistance with the preservation of Point Pinos Lighthouse. Mr. Simpson's final report on the preservation of Point Pinos Lighthouse is expected to be released on October 12, 2004. In compliance with the Secretary of the Interior's Standards for the Treatment of Historic Properties, Simpson has identified key areas of the lighthouse which are in desperate need of repair. They include:

- Building Exterior (entire structure): paint color analysis, stripping, paint remover for stone, window frame repair, repainting
- Lower structure: all wooden-framed windows to be removed, stripped, glass removed and individually numbered, glazed, and replaced
- Exterior stones: current latex paint on stonework needs to be taken off, repainted, and whitewashed with lime
- Gutter roofing system (8-10 areas): metalwork to be replaced with copper; metal flashing to be replaced around chimney
- Slating and redwood paneling throughout structure: all rusted fasteners (nails) to be removed systematically; individually treated, sanded, and finished applied, and if necessary, replaced
- Replacement of Wood (4 areas): approximate size of 1'x6' must be replaced, as the incorrect type of wood is currently in place
- Front and back doors: major work to be completed
- Roof: entire roof to be replaced with wood shingles
- Iron work on tower deck: long term replacement and conservation; balcony area, panel around deck needs replacement
- Tree trimming: on grounds of Lighthouse to be completed

All work will be accomplished in compliance with Secretary of the Interior's Standards for the Treatment of Historic Properties.

To meet the needs of the community, and to allow Americans with Disabilities Act (ADA) access to the structure, the following work has been identified:

- ADA pathway to be installed, widening current sidewalk to meet ADA Accessibility standards
- Installation of an ADA accessible virtual tour of lighthouse, to be installed in rear entrance of lighthouse.

Deteriorating elements of the Point Pinos Lighthouse that need immediate repair, listed above, are further illustrated in Attachment 1 (Visual Description of the Project) of this grant application.

Ten years ago, there was an urgent need to replace the roof. The current metal flashing exhibits rust and corrosion, and the fasteners holding up the roof show signs of deterioration and decay. The roofing completed at the time, was not in compliance with the Secretary of the Interior's Standards for the Treatment of Historic Properties. Over the last few months, the poor condition of the roof has resulted in water intrusion, and water damage causing plaster damage and cracks impacting several rooms and areas in the interior of the lighthouse and need immediate replacement. While there are several areas that need rehabilitation, the roof is identified as needing immediate replacement on an "emergency" basis, since water damage results in further accelerated damage to other areas of the historic building.

These tasks are necessary to ensure that the restoration project complies with the Secretary of the Interior's Standards for the Treatment of Historic Properties.

Question Three: Relationship of Project to Priorities of CCHE

Relationship of Project to Priorities of CCHE

Phase I restoration of the Point Pinos Lighthouse will structurally support the Point Pinos Lighthouse and its programs, exhibits, and tours. The Point Pinos Lighthouse clearly falls in line with the priorities of CCHE, and the purpose of the Endowment under the California Cultural and Historical Endowment Act. Tours, programs, and exhibits at the lighthouse focus on understanding and appreciation of the lighthouse, primary keepers, maritime history, as well as key events in the history of California and Pacific Grove.

Significant elements that add to California's cultural, social, and economic evolution addressed through the Point Pinos Lighthouse include:

Significant events occurring in the 20th century. Point Pinos Lighthouse was an integral part of California's early history. Not only was the lighthouse the second lighthouse lit in California (after the lighthouse at Alcatraz Island), but its construction was authorized by Congress only 19 days after California was admitted to the Union. The call for construction of lighthouses, and the immediate need for a lighthouse at Point Pinos, was spurred by the Gold Rush, California's admission to the Union, and the location of Point Pinos as the approach to Monterey Bay. The lighthouse also facilitates maritime commerce and national defense.

Unique identifiable ethnic and other communities. Tours, exhibits, and programs at the Point Pinos Lighthouse address the history of the Point Pinos lands. Named Point Pinos "Punta de Pinos" by Sebastian Vizcaino in 1602, the land has several roots to Spanish and Native American origins. The Costanoans, an identifiable Native American tribe, resided on the lands prior to Mexican rule. In 1833, during Mexican rule, Jose Figueroa, Governor of Alta California granted Jose Armenta the land on and around Point Pinos. The land has been known as the "Rancho at Point Pinos" until the part of the property was claimed by the federal government. Aspects of the Native American and Spanish influence on the Lighthouse is addressed.

Culturally significant changes. The exhibits and displays at Point Pinos clearly explain changes in culture and lifestyle from the early 1900s until today. Rooms throughout the lighthouse have been restored and re-created to match lifestyles and culture during specific eras and periods of time. They also match the functions of each room in the lighthouse. Legendary Point Pinos Lighthouse Primary Keeper Emily Fish is portrayed in full costume by volunteer actress Roo Hornady almost every Saturday and Sunday for the past several years. She talks about her experience in the first person as the primary keeper for the lighthouse. Her description of living in such a remote area at the time is complemented by the detailed ornaments, accessories, and everyday objects that resemble bedrooms, living rooms, and office space at the time. A depression-era stove, with boxes of dry goods are displayed in the kitchen, an old typewriter, and a fountain pen are among the several objects that transport visitors to the past.

Illustrations of California's economic strength. During Robert Louis Stevenson's four-month stay to Monterey and Pacific Grove, he visited Point Pinos several times. About Point Pinos and Pacific Grove, he wrote: "One day- I shall never forget it – I had taken a trail that was new to me. After a while the woods began to open, the sea to sound nearer at hand. I came upon a road, and, to my surprise, a stile...I walked through street after street, parallel and at right angles, paved with sward and dotted with trees, but still undeniably streets, and each with its name posted at the corner, in a real town... I had never been in a place so dreamlike..." By means of photographs, visual displays, and interpretive tours at the lighthouse, visitors are educated about the

advancement of society and California's economy as years went by. The economy has changed significantly since Stevenson was taken aback by progress in Pacific Grove in 1879, and changes to the lighthouse (such as replacement of kerosene with an incandescent oil lamp in 1913) demonstrate California's growing economy. The lighthouse's role in the process of ship lanes and maritime commerce further growth of the economy.

Factors contributing to the national defense activities. The U.S. Lighthouse Board, a nine-member board of Army engineers, Navy officers and civilian scientists which administered the lighthouse system, was integral in formation of the Point Pinos Lighthouse. With a naval officer in charge of each lighthouse district, assisted by an Army Corps of Engineers officer, Point Pinos Lighthouse was a vital component of national defense activities. The lighthouse assisted naval vessels throughout the 20th century, and is kept lit today to assist in navigation. One of many exhibits at the lighthouse explains the lighthouse's role in World War II. On the night of December 11, 1941, Carmel and Pebble Beach were evacuated, and enemy airplanes were reported over Santa Cruz. On the 18th and 20th, Japanese submarines attacked ships off the coast of Monterey. The Army, Navy, and Coast Guard joined forces with local jurisdictions, and coordinated the "Coastal Information System," and the formation of the U.S. Coast Guard's Beach Patrol, established at Point Pinos.

Natural history of California. The most significant water resource to Pacific Grove and the Point Pinos Lighthouse is the Monterey Bay and Pacific Ocean. The Pacific Ocean, including Monterey Bay, is contiguous to approximately 5.4 miles of the city's boundary. This includes the Monterey Bay National Marine Sanctuary, and within the Sanctuary, the Pacific Grove Marine Gardens, which is part of the Point Pinos coastline. The area is designated as an area of special biological significance, which is emphasized and illustrated at the Point Pinos Lighthouse.

Emphasis on role of women as keepers of lighthouses. In 1856, shortly after the murder of Charles Layton, the first principal keeper of the Point Pinos Lighthouse, his wife Charlotte was appointed principal keeper of the lighthouse. She became the first woman to serve as principal keeper on the West Coast, and the eighth in the nation. Charlotte was left with four children, and continues as principal keeper until 1860. The story of Emily Fish, principal keeper from 1893 through 1914, exemplifies how women endured the challenges of maintaining lighthouses. Fish's story is legendary and heroic; and is continually told through interpretive tours and exhibits. She became the principal keeper at age 50, and remained so for 21 years; astonishing, considering that the average life expectancy for men and women in 1900 was 46 and 48, respectively. Fish's written accounts and lighthouse logs describe how she proved individuals wrong, and demonstrated that women could endure such remarkable tasks.

Over the past several decades, little attention has been brought to the Point Pinos Lighthouse. With the Point Pinos Lighthouse Reservation lands anticipated to be transferred to the City of Pacific Grove on October 12, 2004, maintenance and restoration of the lighthouse can begin with the City as the lead agency. The anticipated sesquicentennial celebration of the Point Pinos Lighthouse on February 1, 2005 is timely; and is expected to coincide with Phase I of the Point Pinos Lighthouse Restoration Project.

Question Four: Ongoing Project Maintenance and Public Accessibility**Project Maintenance**

As mentioned, this grant request is to fulfill Phase I goals of the Point Pinos Lighthouse Restoration Project. Phase I's focus on reroofing and an ADA compliant pathway will lay the groundwork for continued restoration of the lighthouse. Steps taken in Phase I will prevent further water intrusion into the lighthouse.

Funding and Timeline

After CCHE funds are exhausted, the City of Pacific Grove, in collaboration with the Questers and the Pacific Grove Museum of Natural History Association, will raise additional funds to continue ongoing restoration. Additionally, donations from visitors to the lighthouse will fund future phases in the project. The City has secured funds to continue restoration of the lighthouse through the Museum Improvement Fund, the Golf Course Enterprise Fund, and the City General Fund. The City is committed to financially supporting restoration of the lighthouse and preservation of this historic community treasure.

The timeline for restoration of the lighthouse is prioritized based on the preliminary needs assessment, established by Glenn Simpson of the National Park Service. The City has outlined tasks by phases, with estimated dates of completion. They are as follows:

Phase I: Emergency Restoration

Completion Date: Spring 2005

Cost: \$69,672

Tasks:

- Replacement of Roof and Components
- Installation of ADA Compliant Pathway

Phase II: Basic Improvements

Completion Date: Fall 2005

Cost: \$182,584

Tasks:

- Paint Color Analysis of Exterior Structure and Window Trimmings
- Stripping and removal of paint, repainting of exterior
- Numbering, removal, glazing, and reinstallation of all wooden framed glass
- Slating and redwood paneling throughout structure: all rusted fasteners to be removed systematically, individually treated, sanded, finished, and, if necessary, replaced
- Replacement of iron work on deck
- Major work completion on front and back doors

Phase III: Final Long-Term Restoration

Completion Date: Spring 2006

Cost: \$30,586

Tasks:

- Tree trimming
- Landscaping of exterior of building
- Interior painting
- Expansion of pathway around buoy
- Installation of picnic table near buoy

Ongoing Operations and Maintenance

Operation of educational aspects of the lighthouse (e.g.: interactive docent-led tours, activities, events, and exhibits) continue to be volunteer-driven, under the direction of the Pacific Grove Museum of Natural History (a department of the City of Pacific Grove).

Maintenance of the lighthouse grounds will be supported by the City of Pacific Grove Public Works Department. This includes sweeping, litter removal, and ongoing maintenance.

The lens of the lighthouse and beacon light operation will continue to be maintained and operated by the U.S. Coast Guard.

Engaging Long-Term Public Interest

The Questers, volunteers of the Pacific Grove Museum of Natural History Association, along with the Central Coast Lightkeepers Association continue to support the lighthouse, as it has for several years. Long-range plan on how it will continue to engage public interest???

CEQA Compliance

All phases of the Point Pinos Lighthouse Restoration Project are subject to CEQA review and compliance.

Coastal Commission

The project will also be in compliance with the California Coastal Commission and does not require additional permitting from the commission. The project site is within the California Coastal Commission's jurisdiction.

Public Accessibility

The historic Point Pinos Lighthouse will continue to be accessible to the public, as it has been since December 1967, when under agreement with the U.S. Coast Guard, the City administered the lighthouse as a museum. The historic and cultural resource is visible from Ocean View Boulevard and areas throughout the Point Pinos headlands area.

Access to the Lighthouse

Direct access to the lighthouse, and exhibits within the lighthouse, is available Thursday through Monday, from 1 p.m. to 4 p.m. during Fall, Winter, and Spring. During the Summer months, the lighthouse is open to visitors from 10:30 a.m. to 4 p.m. daily. Access to the lighthouse grounds during other times are limited to prevent vandalism and control access, since the lighthouse is located in a remote area. Roughly 35,000 individuals visit the lighthouse each year.

Tours of the lighthouse are provided at no cost to schoolchildren of Monterey County. Children throughout Monterey County who otherwise may not have convenient access to this resource, are given an extensive tour of the lighthouse as part of the Pacific Grove Museum of Natural History's plans. Schools that have received tours of the lighthouse include schools throughout Monterey County. Over 800 schoolchildren are given tours of the lighthouse each year.

Meeting ADA Needs

Widening of the current concrete pathway around the lighthouse to meet ADA specifications will bring in visitors who require wheelchair accessibility to visit the community resource. Community volunteers have contributed significant funds towards development of an interactive video-based 'Tour of the Lighthouse' for those who can only access the lighthouse via wheelchair. This program is supported by the City of Pacific Grove's Americans with Disabilities Act (ADA) Committee.

Outreach

Through the Point Pinos Lighthouse brochure, those who visit the Pacific Grove Library, Pacific Grove Museum of Natural History, Point Sur Lightstation, Pacific Grove City Hall, Monterey Visitors Bureau, and Pacific Grove Visitor Center will be informed of the events, activities, and tours at the lighthouse. A supplemental brochure will be produced and distributed at these locations to further inform the community about the Point Pinos Lighthouse Restoration Project. The brochure, and other information, will call for community support and donations towards the project.

Entrance

Currently, there is no entrance fee for those who visit the Point Pinos Lighthouse. While a suggested donation of \$2 for adults and \$1 for youth was initiated in July 2003 to help offset costs for ongoing maintenance and rehabilitation, visitors are not obligated to donate funds to the lighthouse.

Offering the Resource to a Larger Audience

The Pacific Grove Museum of Natural History continues to encourage visitors to the lighthouse. An effort is made to increase hours of operation. Additionally, schoolchildren from historically underserved and underrepresented communities are encouraged to tour the lighthouse at no cost.

**Question 5: Project Tasks and Budget
for Point Pinos Lighthouse Re-roofing and Widening of Pathway to Meet ADA Accessibility Standards**

Task Description	Task Budget	All Funding Sources	CCHE Funding	Matching Funds	Deliverables
1- Reroofing of Lighthouse, Completed by National Park Service, in compliance with Secretary of the Interior's Standards for the Treatment of Historic Properties					
Labor (605 man-hours, hourly wage range \$28-\$46)	21,356	City Museum Improvement Fund, CCHE, Golf Course Enterprise Fund, City General Fund	10,678	10,678	Permitted New Roof, to Code
Travel Cost for Laborers (day trips & round trips)	10,925	City Museum Improvement Fund, CCHE, Golf Course Enterprise Fund, City General Fund	5,462	5,463	Permitted New Roof, to Code
Equipment (scaffolding & vehicles gas/mileage)	1,819	City Museum Improvement Fund, CCHE, Golf Course Enterprise Fund, City General Fund	909	910	Permitted New Roof, to Code
Roof Materials	6,350	City Museum Improvement Fund, CCHE, Golf Course Enterprise Fund, City General Fund	3,175	3,175	Permitted New Roof, to Code
Record of Treatment	750	City Museum Improvement Fund, CCHE, Golf Course Enterprise Fund, City General Fund	375	375	Permitted New Roof, to Code
Contractor Administrative Fee	8,240	City Museum Improvement Fund, CCHE, Golf Course Enterprise Fund, City General Fund	4,120	4,120	Permitted New Roof, to Code

2- Widening of Pathway to Meet ADA Accessibility Standards					
Labor	12,152	City Museum Improvement Fund, CCHE, Golf Course Enterprise Fund, City General Fund, Private Donation of Services	6,076	6,076	Permitted ADA Accessible Pathway to Lighthouse
Materials	8,080	City Museum Improvement Fund, CCHE, Golf Course Enterprise Fund, City General Fund	4,040	4,040	Permitted ADA Accessible Pathway to Lighthouse
Totals	69,672		34,835	34,837	

Question Six: Project Team and Supporting Documents

Project Team and Supporting Documents

Several individuals and organizations make up the Point Pinos Lighthouse Restoration Project Team. These individuals and groups are well informed and knowledgeable about the Point Pinos Lighthouse, historic preservation, Secretary of the Interior's Standards for the Treatment of Historic Properties, and maintenance of lighthouses.

Key individuals, some representing an organization (many listed and further described in this section) are:

Paul Finnegan

Title: Director, Pacific Grove Museum of Natural History

Employer: City of Pacific Grove

Relationship to Applicant: Employee

Number of Years Affiliated with Applicant: 25

Past Experiences and Accomplishments in Field: Paul M. Finnegan has been the Assistant Curator at the Pacific Grove Museum of Natural History since 1979. In 2004 he was appointed museum Director. The Museum Department has been responsible for the interpretation of the history of the Point Pinos Lighthouse, care of the artifacts and contact dept for historical research and inquiries. His role shall be the contact person for the on site work at the Lighthouse and at this time the City Department coordinating the Historic Preservation Project. His background is a degree in archival management, member of the American Association for State and Local History, degree in Museum Studies which included course work in conservation and historic interpretation, employee as an archival aid at the National Archives and Records Center, San Bruno, California.

Glenn D. Simpson

Title: Supervisory Exhibit Specialist

Employer: National Park Service

Relationship to Applicant: Advisor

Number of Years Affiliated with Applicant: Less than 1

Past Experiences and Accomplishments in Field: Paul M. Finnegan has been the Assistant Curator at the Pacific Grove Museum of Natural History since 1979. In 2004 he was appointed museum Director. The Museum Department has been responsible for the interpretation of the history of the Point Pinos Lighthouse, care of the

artifacts and contact dept for historical research and inquiries. His role shall be the contact person for the on site work at the Lighthouse and at this time the City Department coordinating the Historic Preservation Project. His background is a degree in archival management, member of the American Association for State and Local History, degree in Museum Studies which included course work in conservation and historic interpretation, employee as an archival aid at the National Archives and Records Center, San Bruno, California.

Key organizations involved with this project are:

City of Pacific Grove

Relationship to Applicant: Self

Experience with Project: Administered Point Pinos Lighthouse museum program (1967-Present); Recipient of Deed to Point Pinos Lighthouse (signing of deed on October ____, 2004.)

Summary of Organization's Mission: The City of Pacific Grove is dedicated to maintaining operations of the

Individuals Involved in Project, and in what capacity:

- Ross G. Hubbard, City Manager: Chief Administrative Officer of the City of Pacific Grove, authorizes project scope and oversees all city functions
- Steve Leiker, Director of Public Works: Oversees all maintenance work, landscaping work completed on Lighthouse grounds
- Frank Ono, City Forester: Makes recommendations and analysis of conditions and possible action on all trees and shrubs on premises

United States Coast Guard (U.S.C.G.)

Relationship to Applicant: Operator of Point Pinos Lighthouse; works closely with City on operation of building

Experience with Project: Operates Point Pinos Lighthouse beacon

Pacific Grove Museum of Natural History

Relationship to Applicant: Department of the City of Pacific Grove

Experience with Project: Operates Point Pinos Lighthouse museum programs, volunteer and docent programs

Summary of Organization's Mission: The Museum's mission is to preserve, study, exhibit, and interpret the natural history and aboriginal human inhabitants of Monterey County, with special emphasis on the Monterey Peninsula region, and to preserve, study, exhibit, and interpret other natural history and aboriginal collections as resources permit. The primary purpose of these activities is the education of the public, both local residents and

visitors, both children and adults. A corollary function of the Museum is to advise the City of Pacific Grove and other public agencies on matters of facts, principles, and issues regarding natural history. Secondly, the Museum supports original science through its collections and staff.

Individuals Involved in Project, and in what capacity:

- Paul Finnegan, Museum Director (see information above)
- Esther Trosow, Museum Archivist (see information above)



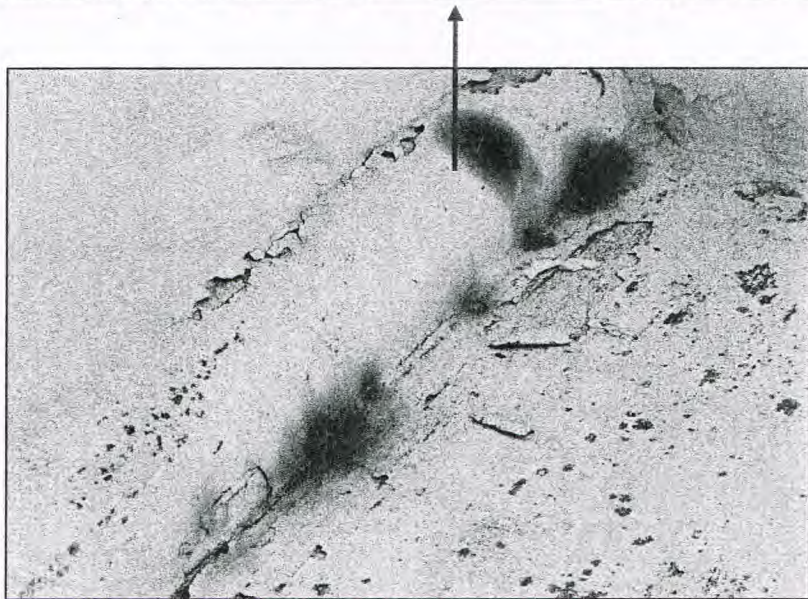
PT. PINOS LIGHTHOUSE-EAST ELEVATION



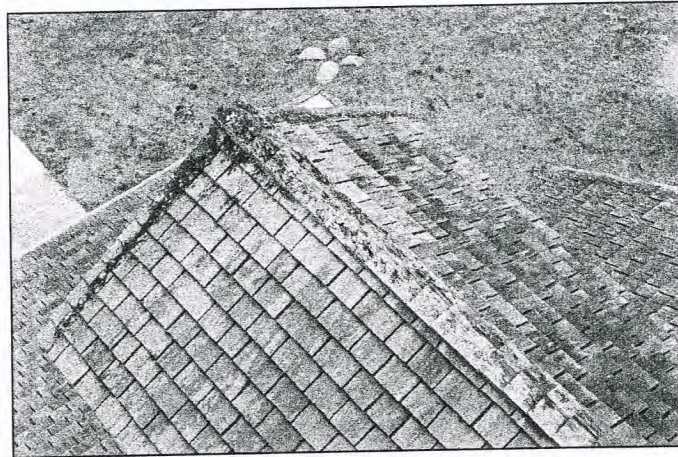
PT. PINOS LIGHTHOUSE-WEST ELEVATION



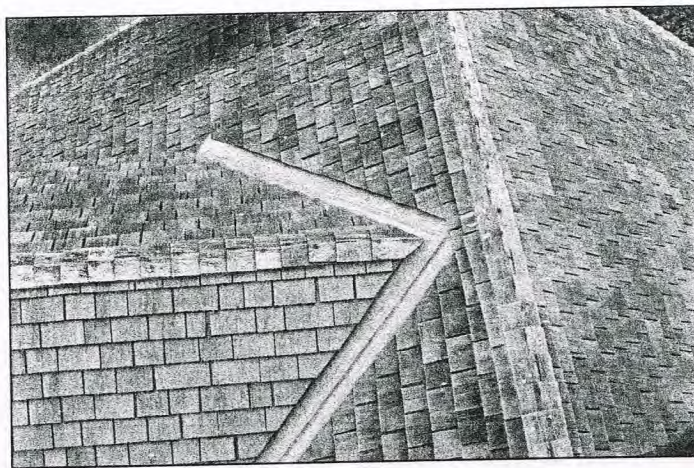
DETERIORATING WINDOW CONDITION DUE TO PEELING PAINT AND RUST



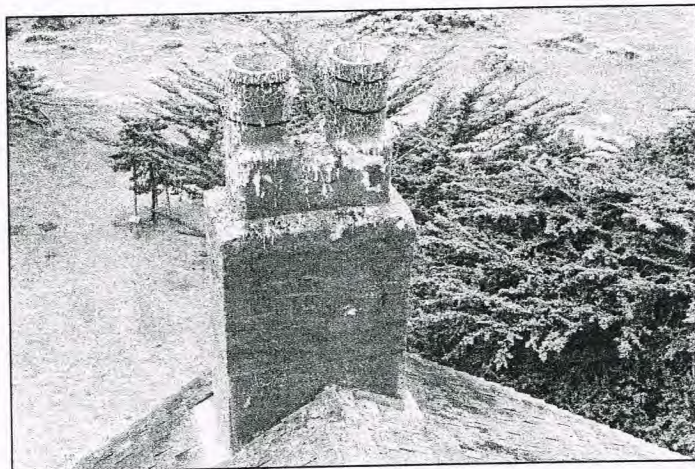
RUST PRESENT THROUGHOUT BUILDING EXTERIOR



WORN WOOD ROOF SHINGLES

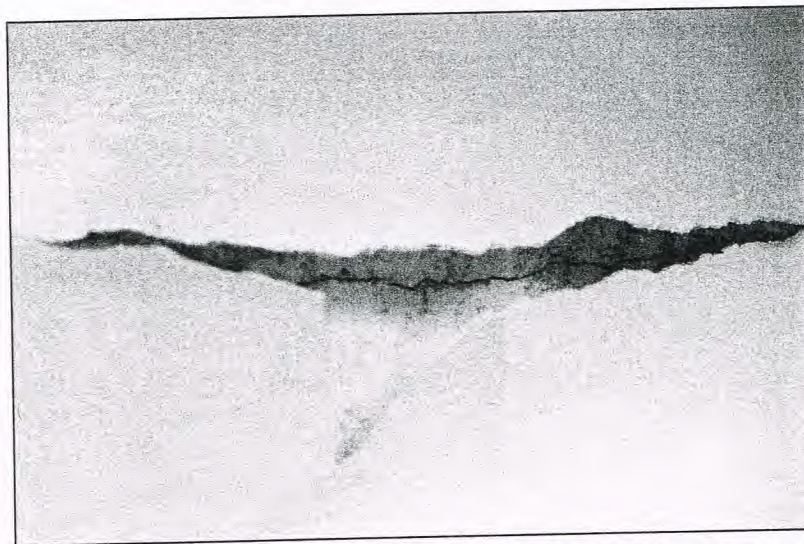


FLASHING TO BE REPLACED





INTERIOR PLASTER WATER DAMAGE



PLASTER CRACKS RESULTING FROM WATER DAMAGE TO INTERIOR



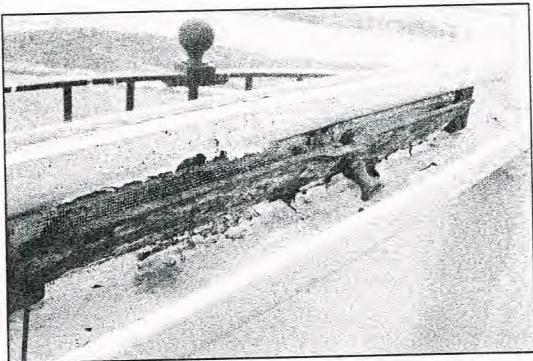
RUST ON PARAPET PANELS



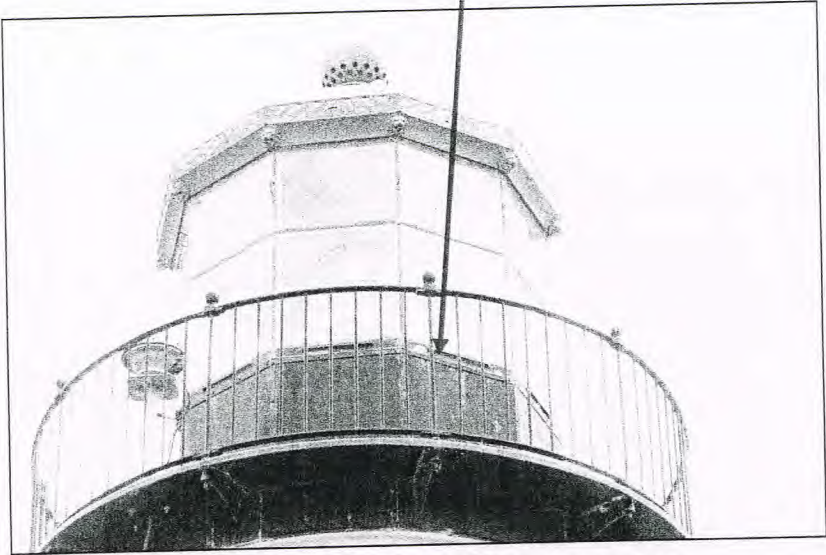
LANTERN ROOM AND GALLERY DECK



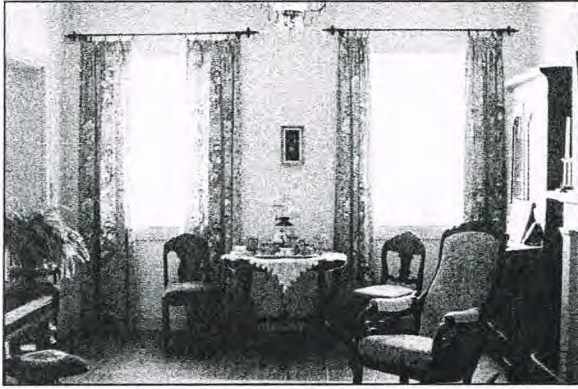
GALLERY DECK DETERIORATION



SILL VENT DETERIORATION



LANTERN ROOM AND GALLERY DECK

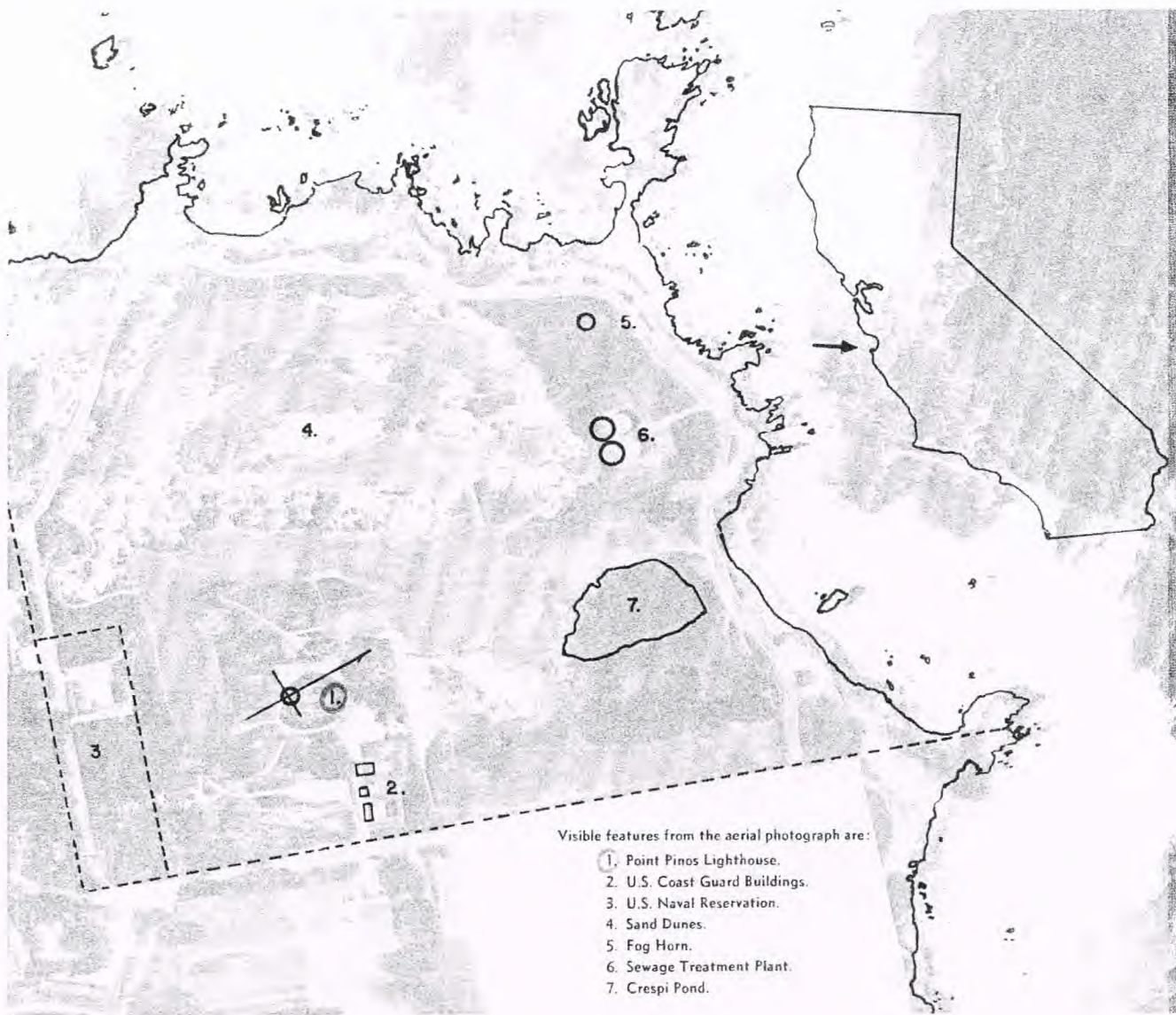


PARLOR



DINING ROOM





OVERVIEW OF POINT PINOS LIGHTHOUSE

RESOLUTION NO. _____

**RESOLUTION OF THE CITY COUNCIL OF THE CITY OF PACIFIC GROVE
APPROVING THE APPLICATION FOR CALIFORNIA CULTURAL AND
HISTORICAL ENDOWMENT (CCHE) GRANT FUNDS FOR THE POINT
PINOS LIGHTHOUSE RESTORATION PROJECT PHASE I UNDER THE
CALIFORNIA CLEAN WATER, CLEAN AIR, SAFE NEIGHBORHOOD
PARKS, AND COASTAL PROTECTION ACT OF 2002**

WHEREAS, the people of the State of California have enacted the California Clean Water, Clean Air, Safe Neighborhood Parks, and Coastal Protection Act of 2002, which provides funds to the State of California for the California Cultural and Historical Endowment (CCHE) Grant Program; and

WHEREAS, the California Cultural and Historical Endowment (CCHE) has been delegated the responsibility for the administration of the Grant Program, setting up necessary procedures; and

WHEREAS, these procedures require the City of Pacific Grove to certify by resolution the approval of an application before submission of the application to the California Cultural and Historical Endowment (CCHE); and

WHEREAS, if the City of Pacific Grove is awarded a grant, the City of Pacific Grove will enter into a Grant Agreement with the California Cultural and Historical Endowment (CCHE) for the Project;

WHEREAS, the Point Pinos Lighthouse has shone reliably since 1855;

WHEREAS, the Point Pinos Lighthouse is the oldest continuously-operating lighthouse on the west coast;

WHEREAS, the Point Pinos Lighthouse continues to draw over forty-thousand visitors each year;

WHEREAS, the Point Pinos Lighthouse is an integral part of the history and culture of Pacific Grove, the Monterey Peninsula, the United States military, the United States Coast Guard, and California;

WHEREAS, repairs and restoration to the Point Pinos Lighthouse are necessary to maintain and preserve the condition of the historic resource;

WHEREAS, the City of Pacific Grove, community organizations, and volunteers are dedicated to maintaining, restoring, and preserving the historical, cultural, and natural aspects of the Point Pinos Lighthouse;

WHEREAS, on October 6, 2004, the City Council of the City of Pacific Grove, California, considered the proposed project and authorized staff to submit a grant

application for the Point Pinos Lighthouse Restoration Project, Phase I, to the California Cultural and Historical Endowment (CCHE);

NOW, THEREFORE, THE CITY COUNCIL OF THE CITY OF PACIFIC GROVE DOES RESOLVE AS FOLLOWS:

SECTION 1. Approves the filing of a CCHE Grant Application for the above project to be funded from the California Clean Water, Clean Air, Safe Neighborhood Parks, and Coastal Protection Act of 2002.

SECTION 2. Certifies that the City of Pacific Grove has or will have sufficient funds to operate and maintain the project, and where applicable, to complete the project.

SECTION 3. Certifies that the City of Pacific Grove has reviewed, understands and agrees to the General Provisions of the Grant Agreement.

SECTION 4. Appoints the City Manager as agent to conduct all negotiations, execute and submit all documents including, but not limited to, Applications, Agreements, payment requests and so on, which may be necessary for the completion of the project.

PASSED AND ADOPTED BY THE COUNCIL OF THE CITY OF PACIFIC GROVE this 6th day of October, 2004, by the following vote:

AYES:

NOES:

ABSENT:

APPROVED:

MORRIS G. FISHER, Mayor

ATTEST:

ROSS G. HUBBARD, City Clerk

APPROVED AS TO FORM:

DAVID M. FLEISHMAN, City Attorney

Please return section below if you have not already done so we can be sure artists received invitation to participate to:

Renee Baldocchi, Dia de Los Muertos

Legion of Honor

100 – 34th Ave.

San Francisco, CA 94121

By October 1.

YES I will participate _____

Name _____

Address _____

Phone _____

E-mail _____

Type of work _____

Dimensions _____

Brief description of work _____

PLEASE RETURN THIS FORM BY OCTOBER 1