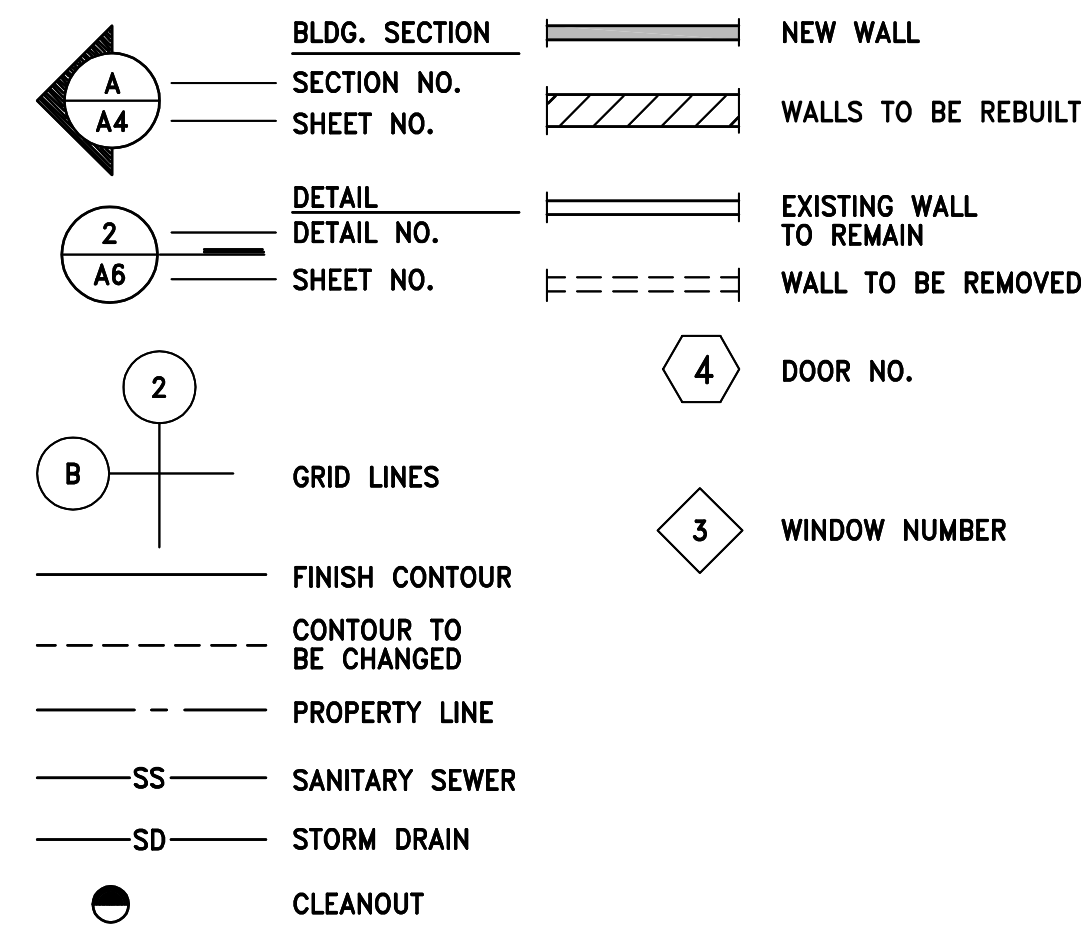


# Symbols



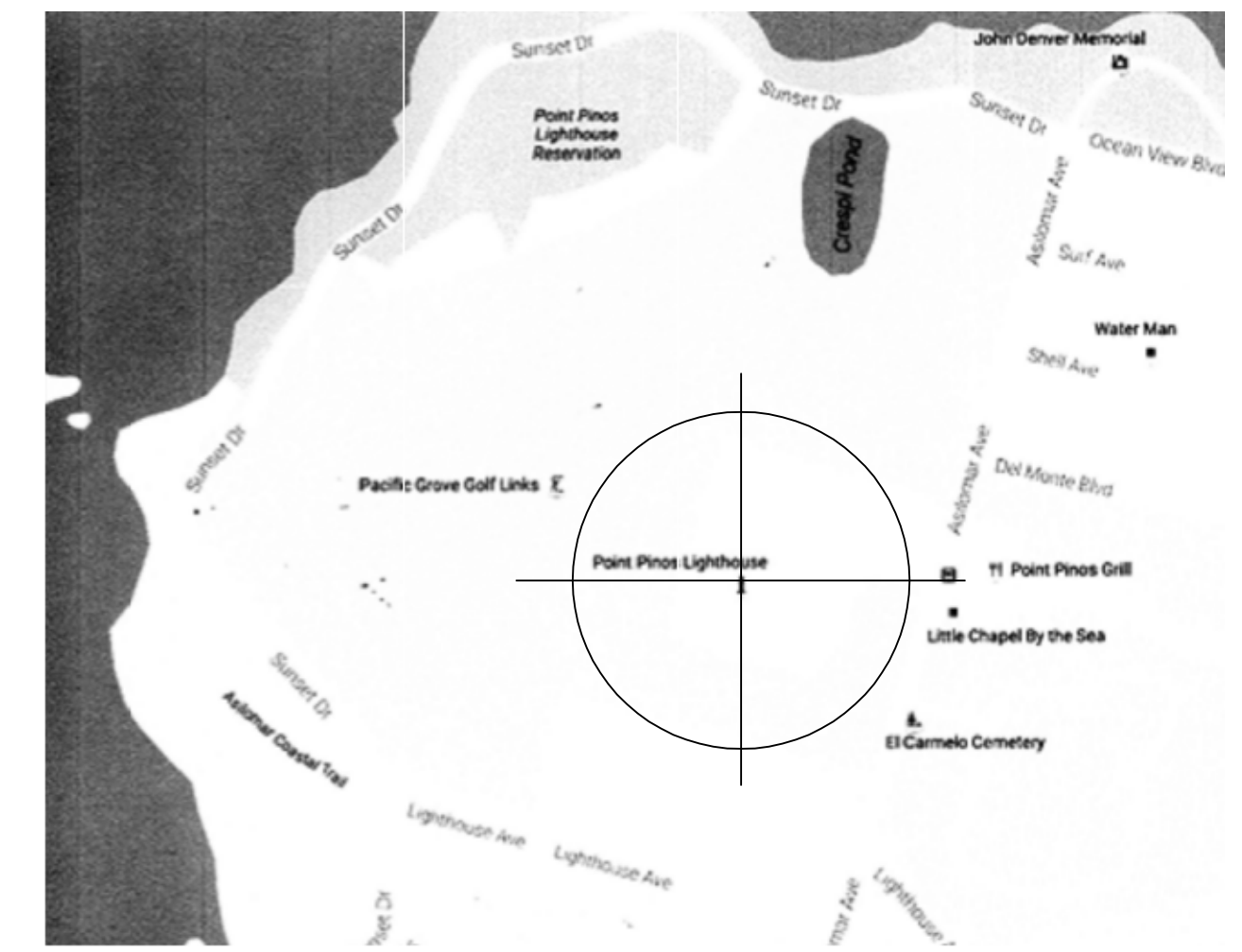
# Directory

**OWNER:**  
THE CITY OF PACIFIC GROVE  
300 FOREST AVENUE  
PACIFIC GROVE CA 93950

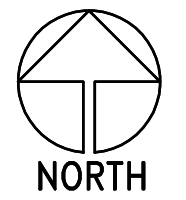
**ARCHITECT:**  
RICK STERES  
230 FOUNTAIN AVE. SUITE 6  
PACIFIC GROVE CA 93950  
(831) 646-1131

# General Notes

PROJECT SHALL COMPLY WITH THE FOLLOWING REFERENCE CODES:  
2013 CALIFORNIA BUILDING CODE  
2013 CALIFORNIA BUILDING STANDARDS ADMINISTRATIVE CODE  
2013 CALIFORNIA FIRE CODE  
2013 CALIFORNIA HISTORICAL BUILDING CODE



# Vicinity Map

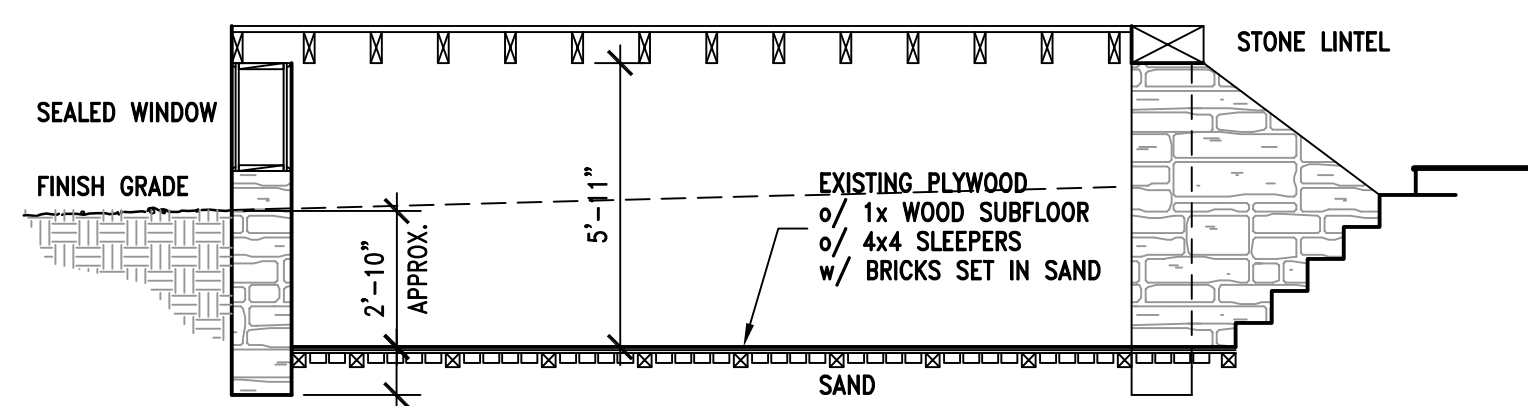


# Project Data:

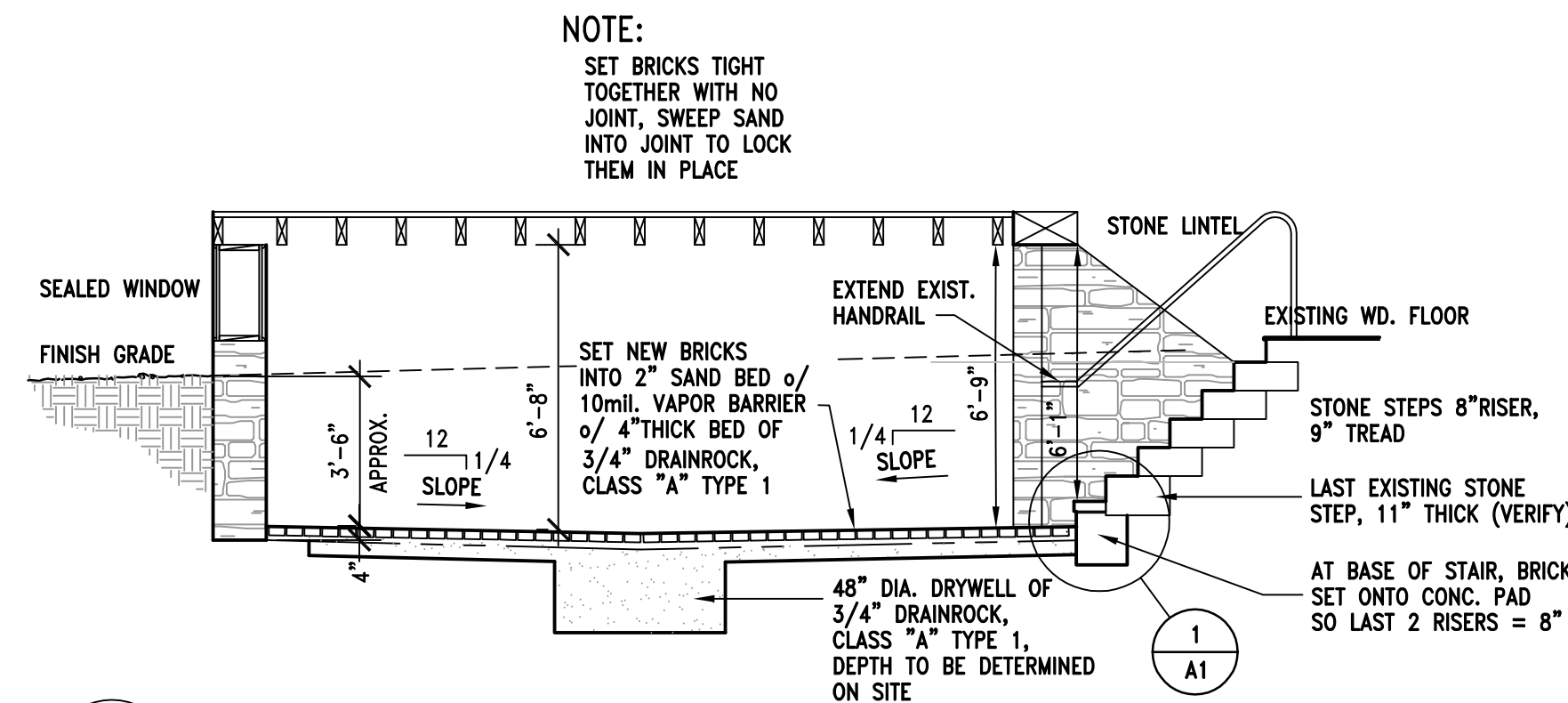
## SCOPE OF WORK:

CREATE A BETTER DISPLAY SPACE IN THE FRONT PART OF THE CELLAR BY LOWERING THE FLOOR TO ALLOW FOR 6"-8" OF HEADROOM AND RESTORE THE FLOOR TO IT'S ORIGINAL MATERIAL: BRICK SET IN SAND.

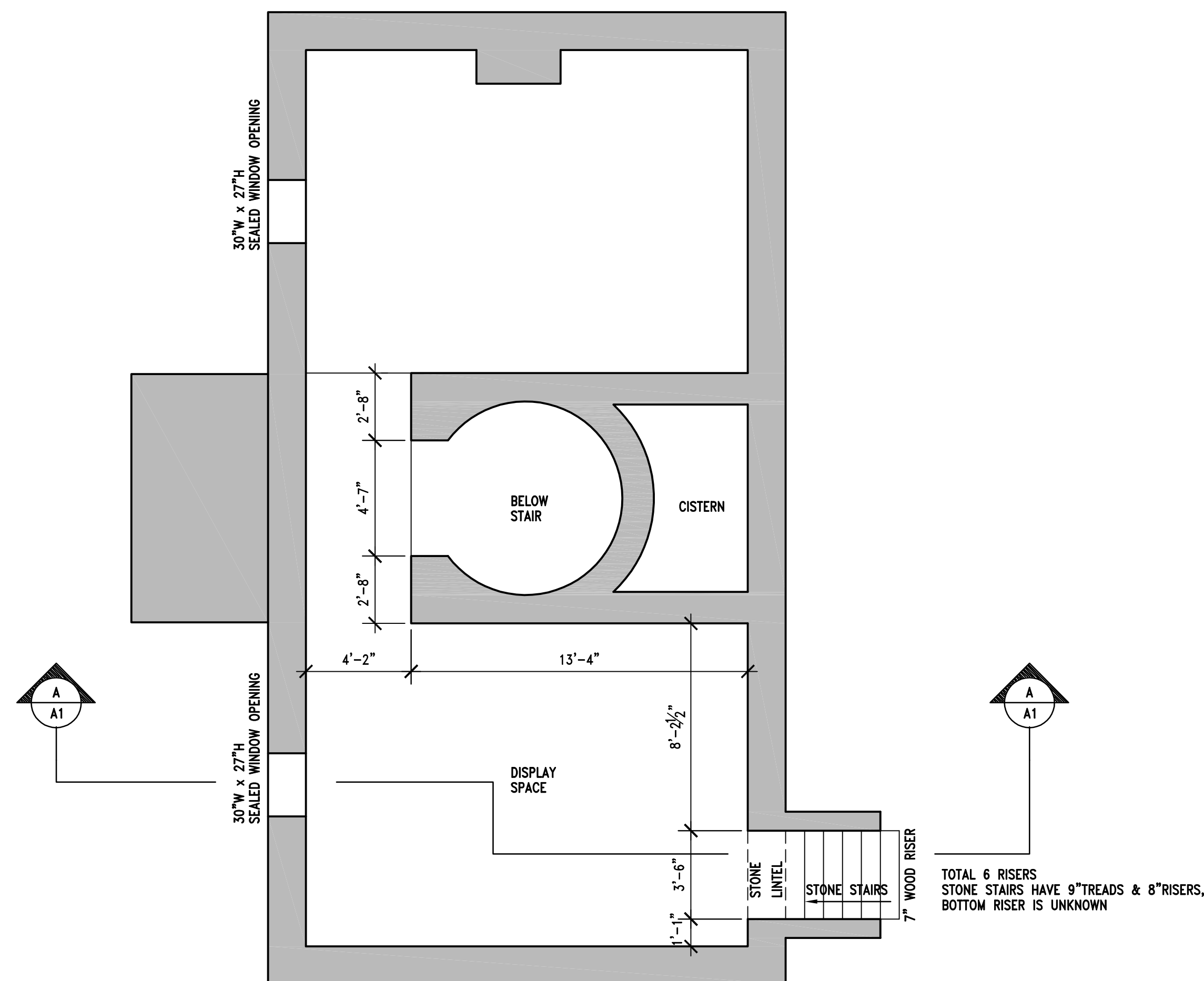
A.P.N.	007-001-002
ZONE	O
LOT SIZE	20.76 Ac
OCCUPANCY TYPE	B
CONSTRUCTION TYPE	VB



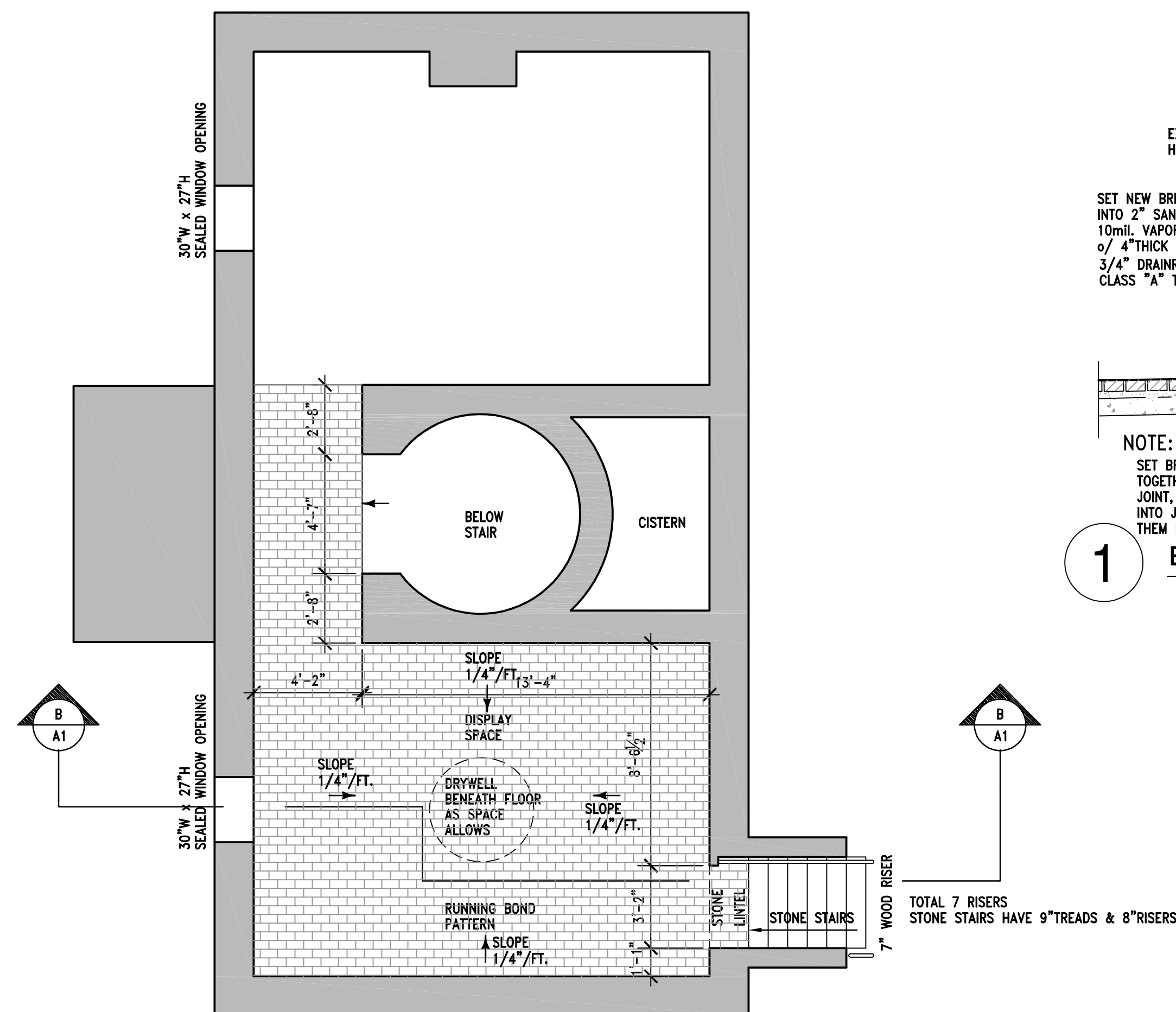
**A** Existing Building Section



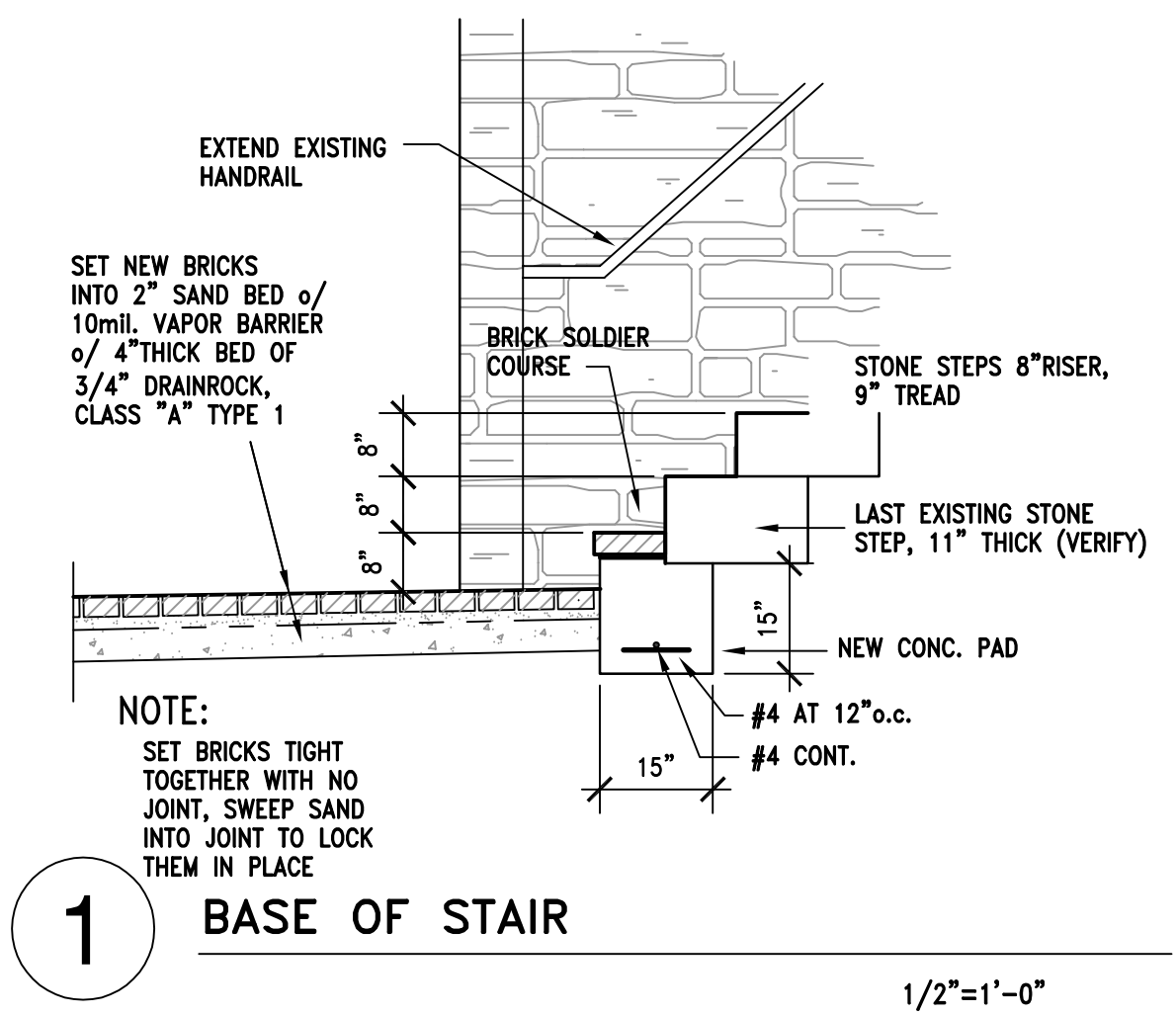
**B** Proposed Building Section



Existing Cellar Plan



Proposed Cellar Plan

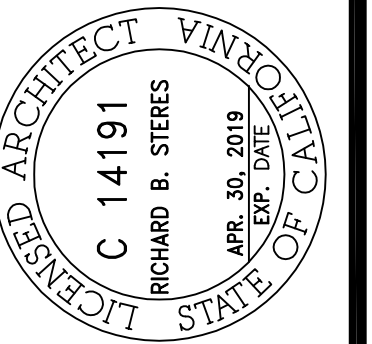


**1** BASE OF STAIR

1/2"=1'-0"

REVISIONS	BY

**Rick Steres Architect**  
Phone & Fax: 831-646-1131  
230 Fountain Avenue Suite 6, Pacific Grove, CA, 93950  
ricksteres@hotmail.com  
ricksteresarchitect.com  
Web Site:



**Plan & Section**  
Lighthouse Restoration  
**Pt. Pinos Lighthouse - Cellar Floor**  
80 ASILOMAR AVENUE, PACIFIC GROVE, CA 93950

DATE	NOVEMBER 2, 2016
SCALE	1/4"=1'-0"
JOB NUMBER	

SHEET  
**A1**  
OF 1 SHEETS