

Point Pinos Lighthouse Restoration

CITY OF PACIFIC GROVE, CALIFORNIA

DOUGLAS HOWE
ARCHITECT
56 NINTH STREET
PACIFIC GROVE, CALIFORNIA
831 - 647 - 1774



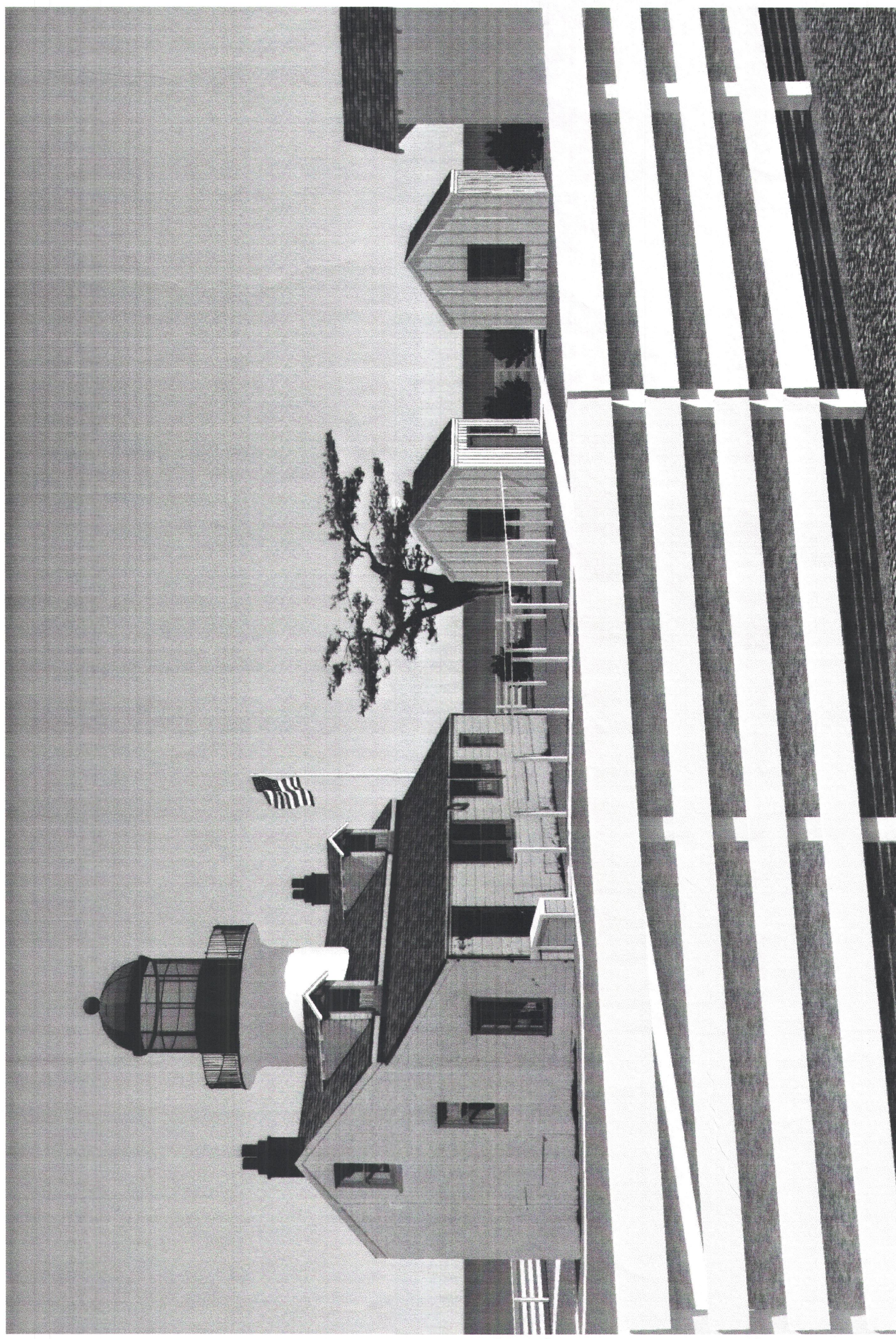
PROJECT: **Point Pinos Lighthouse Restoration**
CITY OF PACIFIC GROVE

DATE: MAY 19, 2000
REVISIONS:

DRAWN BY:
D. HOME

SHEET TITLE:

SHEET **0**



PROJECT DATA

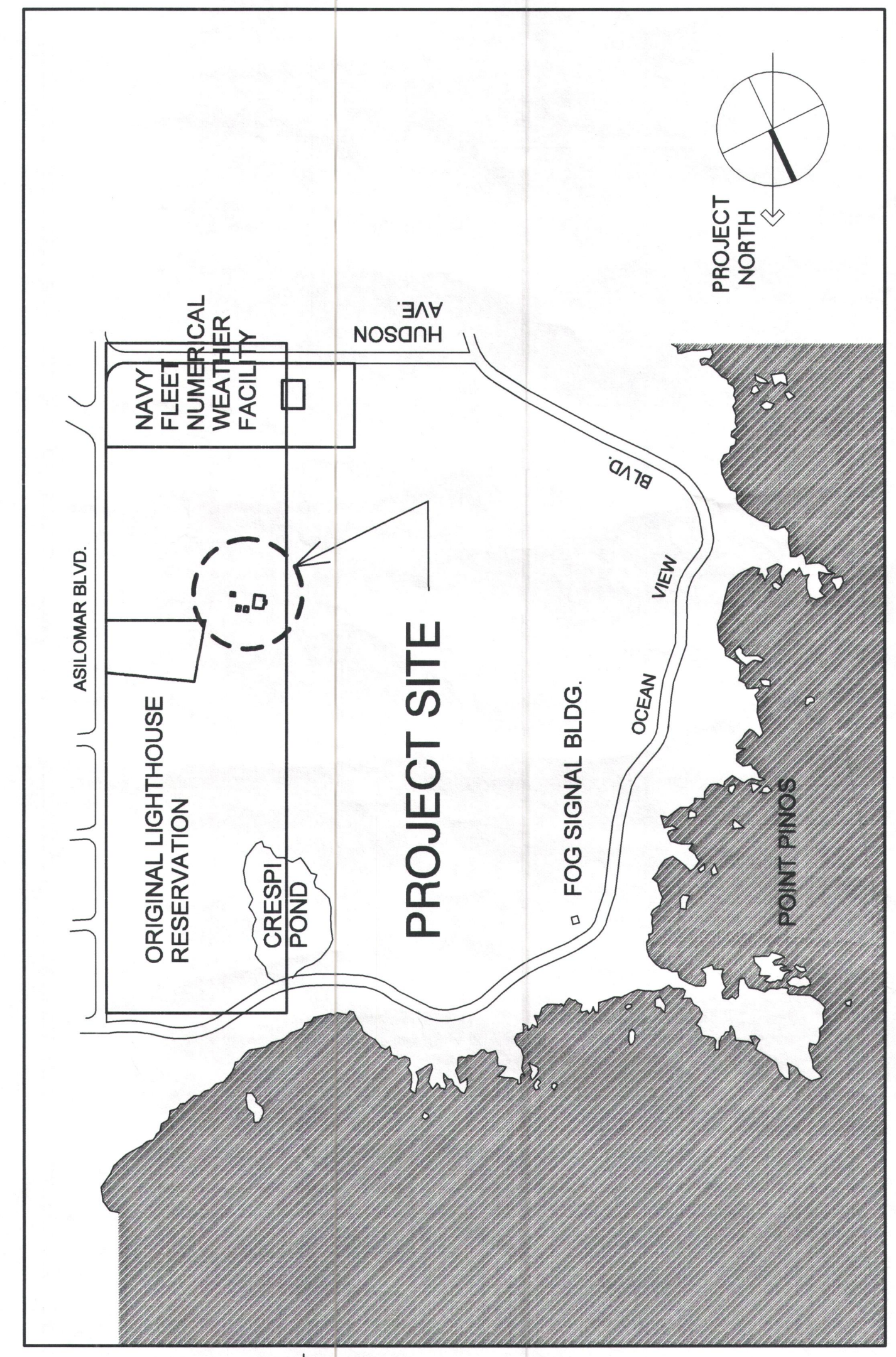
PROJECT DESCRIPTION
THE PROJECT CONSISTS OF RESTORATION OF
2 OUTBUILDINGS WITH HANDICAP ACCESSIBLE
TOILETS AND PARKING.

PROJECT LOCATION: POINT PINOS, PACIFIC GROVE, CALIFORNIA
APN: 007-001-02
ZONING: O
TYPE CONSTRUCTION: TYPE V-B
OCCUPANCY: B
SITE AREA: 20.76 ACRES
BUILDING SITE COVERAGE:
EXISTING LIGHTHOUSE: 1231 SF.
EXISTING OIL BUILDING: 125 SF.
NEW BUILDINGS:
GIFT SHOP: 165 SF.
RESTROOM: 165 SF.

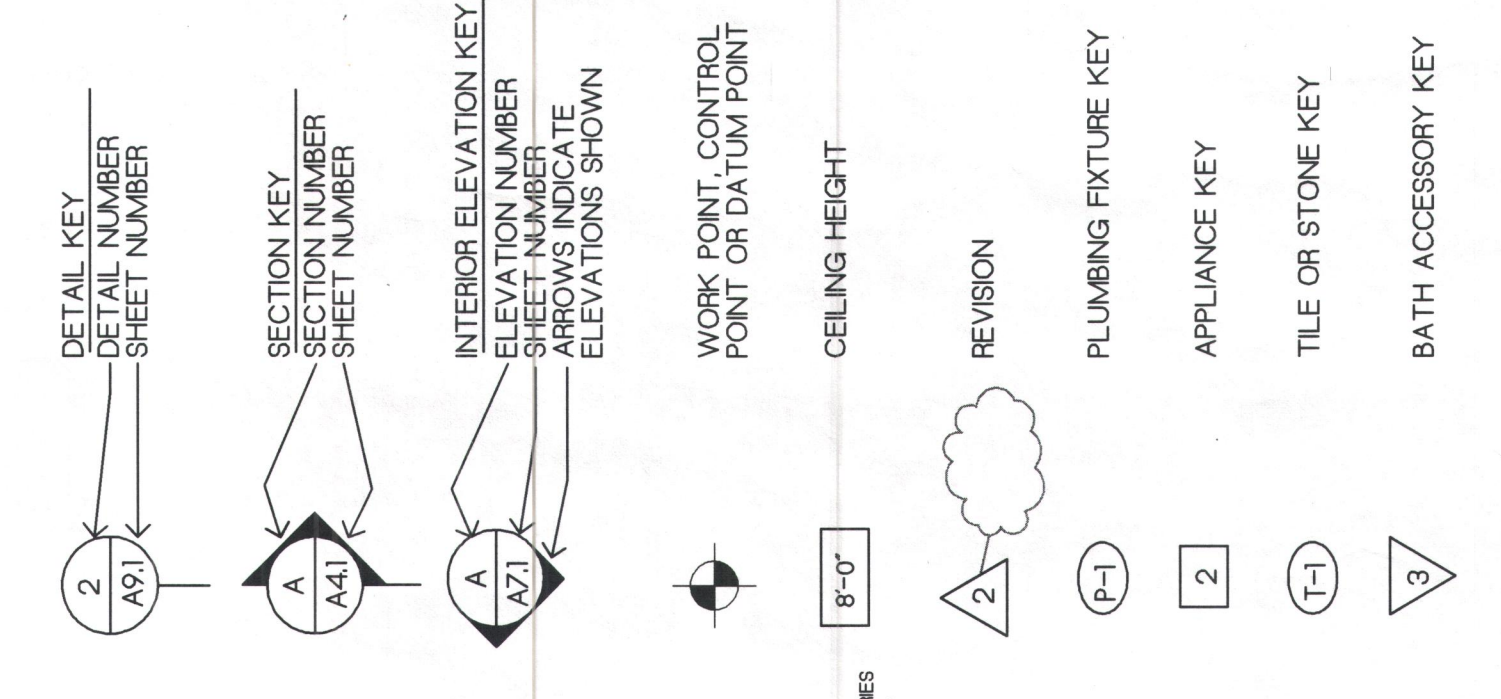
SHEET INDEX

- 0 COVER SHEET
- 1 OVERALL SITE PLAN
- 2 SITE PLAN
- 3 OUTBUILDING PLANS & ELEVATIONS
- 4 SITE DETAILS
- 5 OUTBUILDING DETAILS/DETAILS
- 6 FENCE DETAILS

VICINITY MAP



SYMBOLS



ABBREVIATIONS

1	AND	DBL	DOUBLE	HE	HOSE END	OB	OVER	SHG	SHEDDING
2	AT	DET	DETAIL	H.C.	HOLLOW CORE	OC	ON CENTER	SS	STAINLESS STEEL
3	CENTERLINE	DI	DOUBLE LINE	H.W.	HARDWOOD	OD	OFF SET	SMS	SHEET METAL SCREW
4	CONCRETE	DAG	DIAGONAL	H.W.R.	HARDWARE	OH	OH HAS	SPCS	SPECIFICATIONS
5	DIMENSION	DMN	DIMENSION	H.R.Z.	HORIZONTAL	OH	OVERHANG	STL	STEEL
6	FOUNDATION	DRP	DRIP	HST	HOT WATER	CRNG	CORNER	STD	STANDARD
7	EXISTING	DWG	DRAWING	H.W.	HOT WATER	CRNG	CORNER	STR	STRUCTURAL
8	ANCHOR BOLT	DWG	DRAWING	H.W.	HOT WATER	CRNG	CORNER	STR	STRUCTURAL
9	STRENGTH	DWG	DRAWING	H.W.	HOT WATER	CRNG	CORNER	STR	STRUCTURAL
10	ASPHALTIC CONCRETE	AC	ASPHALTIC CONCRETE	H.W.	HOT WATER	CRNG	CORNER	STR	STRUCTURAL
11	ACQUISITION	ACQ	ACQUISITION	H.W.	HOT WATER	CRNG	CORNER	STR	STRUCTURAL
12	ADJUSTABLE JOINT	ADJ	ADJUSTABLE JOINT	H.W.	HOT WATER	CRNG	CORNER	STR	STRUCTURAL
13	ADJACENT	ADJ	ADJACENT	H.W.	HOT WATER	CRNG	CORNER	STR	STRUCTURAL
14	ADJACENT FLOOR	ADJ	ADJACENT FLOOR	H.W.	HOT WATER	CRNG	CORNER	STR	STRUCTURAL
15	AGGREGATE	AGR	AGGREGATE	H.W.	HOT WATER	CRNG	CORNER	STR	STRUCTURAL
16	AGGREGATE FLOOR	AGR	AGGREGATE FLOOR	H.W.	HOT WATER	CRNG	CORNER	STR	STRUCTURAL
17	AGGREGATE	AGR	AGGREGATE	H.W.	HOT WATER	CRNG	CORNER	STR	STRUCTURAL
18	AGGREGATE	AGR	AGGREGATE	H.W.	HOT WATER	CRNG	CORNER	STR	STRUCTURAL
19	AGGREGATE	AGR	AGGREGATE	H.W.	HOT WATER	CRNG	CORNER	STR	STRUCTURAL
20	AGGREGATE	AGR	AGGREGATE	H.W.	HOT WATER	CRNG	CORNER	STR	STRUCTURAL
21	AGGREGATE	AGR	AGGREGATE	H.W.	HOT WATER	CRNG	CORNER	STR	STRUCTURAL
22	AGGREGATE	AGR	AGGREGATE	H.W.	HOT WATER	CRNG	CORNER	STR	STRUCTURAL
23	AGGREGATE	AGR	AGGREGATE	H.W.	HOT WATER	CRNG	CORNER	STR	STRUCTURAL
24	AGGREGATE	AGR	AGGREGATE	H.W.	HOT WATER	CRNG	CORNER	STR	STRUCTURAL
25	AGGREGATE	AGR	AGGREGATE	H.W.	HOT WATER	CRNG	CORNER	STR	STRUCTURAL
26	AGGREGATE	AGR	AGGREGATE	H.W.	HOT WATER	CRNG	CORNER	STR	STRUCTURAL
27	AGGREGATE	AGR	AGGREGATE	H.W.	HOT WATER	CRNG	CORNER	STR	STRUCTURAL
28	AGGREGATE	AGR	AGGREGATE	H.W.	HOT WATER	CRNG	CORNER	STR	STRUCTURAL
29	AGGREGATE	AGR	AGGREGATE	H.W.	HOT WATER	CRNG	CORNER	STR	STRUCTURAL
30	AGGREGATE	AGR	AGGREGATE	H.W.	HOT WATER	CRNG	CORNER	STR	STRUCTURAL
31	AGGREGATE	AGR	AGGREGATE	H.W.	HOT WATER	CRNG	CORNER	STR	STRUCTURAL
32	AGGREGATE	AGR	AGGREGATE	H.W.	HOT WATER	CRNG	CORNER	STR	STRUCTURAL
33	AGGREGATE	AGR	AGGREGATE	H.W.	HOT WATER	CRNG	CORNER	STR	STRUCTURAL
34	AGGREGATE	AGR	AGGREGATE	H.W.	HOT WATER	CRNG	CORNER	STR	STRUCTURAL
35	AGGREGATE	AGR	AGGREGATE	H.W.	HOT WATER	CRNG	CORNER	STR	STRUCTURAL
36	AGGREGATE	AGR	AGGREGATE	H.W.	HOT WATER	CRNG	CORNER	STR	STRUCTURAL
37	AGGREGATE	AGR	AGGREGATE	H.W.	HOT WATER	CRNG	CORNER	STR	STRUCTURAL
38	AGGREGATE	AGR	AGGREGATE	H.W.	HOT WATER	CRNG	CORNER	STR	STRUCTURAL
39	AGGREGATE	AGR	AGGREGATE	H.W.	HOT WATER	CRNG	CORNER	STR	STRUCTURAL
40	AGGREGATE	AGR	AGGREGATE	H.W.	HOT WATER	CRNG	CORNER	STR	STRUCTURAL
41	AGGREGATE	AGR	AGGREGATE	H.W.	HOT WATER	CRNG	CORNER	STR	STRUCTURAL
42	AGGREGATE	AGR	AGGREGATE	H.W.	HOT WATER	CRNG	CORNER	STR	STRUCTURAL
43	AGGREGATE	AGR	AGGREGATE	H.W.	HOT WATER	CRNG	CORNER	STR	STRUCTURAL
44	AGGREGATE	AGR	AGGREGATE	H.W.	HOT WATER	CRNG	CORNER	STR	STRUCTURAL
45	AGGREGATE	AGR	AGGREGATE	H.W.	HOT WATER	CRNG	CORNER	STR	STRUCTURAL
46	AGGREGATE	AGR	AGGREGATE	H.W.	HOT WATER	CRNG	CORNER	STR	STRUCTURAL
47	AGGREGATE	AGR	AGGREGATE	H.W.	HOT WATER	CRNG	CORNER	STR	STRUCTURAL
48	AGGREGATE	AGR	AGGREGATE	H.W.	HOT WATER	CRNG	CORNER	STR	STRUCTURAL
49	AGGREGATE	AGR	AGGREGATE	H.W.	HOT WATER	CRNG	CORNER	STR	STRUCTURAL
50	AGGREGATE	AGR	AGGREGATE	H.W.	HOT WATER	CRNG	CORNER	STR	STRUCTURAL
51	AGGREGATE	AGR	AGGREGATE	H.W.	HOT WATER	CRNG	CORNER	STR	STRUCTURAL
52	AGGREGATE	AGR	AGGREGATE	H.W.	HOT WATER	CRNG	CORNER	STR	STRUCTURAL
53	AGGREGATE	AGR	AGGREGATE	H.W.	HOT WATER	CRNG	CORNER	STR	STRUCTURAL
54	AGGREGATE	AGR	AGGREGATE	H.W.	HOT WATER	CRNG	CORNER	STR	STRUCTURAL
55	AGGREGATE	AGR	AGGREGATE	H.W.	HOT WATER	CRNG	CORNER	STR	STRUCTURAL
56	AGGREGATE	AGR	AGGREGATE	H.W.	HOT WATER	CRNG	CORNER	STR	STRUCTURAL
57	AGGREGATE	AGR	AGGREGATE	H.W.	HOT WATER	CRNG	CORNER	STR	STRUCTURAL
58	AGGREGATE	AGR	AGGREGATE	H.W.	HOT WATER	CRNG	CORNER	STR	STRUCTURAL
59	AGGREGATE	AGR	AGGREGATE	H.W.	HOT WATER	CRNG	CORNER	STR	STRUCTURAL
60	AGGREGATE	AGR	AGGREGATE	H.W.	HOT WATER	CRNG	CORNER	STR	STRUCTURAL
61	AGGREGATE	AGR	AGGREGATE	H.W.	HOT WATER	CRNG	CORNER	STR	STRUCTURAL
62	AGGREGATE	AGR	AGGREGATE	H.W.	HOT WATER	CRNG	CORNER	STR	STRUCTURAL
63	AGGREGATE	AGR	AGGREGATE	H.W.	HOT WATER	CRNG	CORNER	STR	STRUCTURAL
64	AGGREGATE	AGR	AGGREGATE	H.W.	HOT WATER	CRNG	CORNER	STR	STRUCTURAL
65	AGGREGATE	AGR	AGGREGATE	H.W.	HOT WATER	CRNG	CORNER	STR	STRUCTURAL
66	AGGREGATE	AGR	AGGREGATE	H.W.	HOT WATER	CRNG	CORNER	STR	STRUCTURAL
67	AGGREGATE	AGR	AGGREGATE	H.W.	HOT WATER	CRNG	CORNER	STR	STRUCTURAL
68	AGGREGATE	AGR	AGGREGATE	H.W.	HOT WATER	CRNG	CORNER	STR	STRUCTURAL
69	AGGREGATE	AGR	AGGREGATE	H.W.	HOT WATER	CRNG	CORNER	STR	STRUCTURAL
70	AGGREGATE	AGR	AGGREGATE	H.W.	HOT WATER	CRNG	CORNER	STR	STRUCTURAL
71	AGGREGATE	AGR	AGGREGATE	H.W.	HOT WATER	CRNG	CORNER	STR	STRUCTURAL
72	AGGREGATE	AGR	AGGREGATE	H.W.	HOT WATER	CRNG	CORNER	STR	STRUCTURAL
73	AGGREGATE	AGR	AGGREGATE	H.W.	HOT WATER	CRNG	CORNER	STR	STRUCTURAL
74	AGGREGATE	AGR	AGGREGATE	H.W.	HOT WATER	CRNG	CORNER	STR	STRUCTURAL
75	AGGREGATE	AGR	AGGREGATE	H.W.	HOT WATER	CRNG	CORNER	STR	STRUCTURAL
76	AGGREGATE	AGR	AGGREGATE	H.W.	HOT WATER	CRNG	CORNER	STR	STRUCTURAL
77	AGGREGATE	AGR	AGGREGATE	H.W.	HOT WATER	CRNG	CORNER	STR	STRUCTURAL
78	AGGREGATE	AGR	AGGREGATE	H.W.	HOT WATER	CRNG	CORNER	STR	STRUCTURAL
79	AGGREGATE	AGR	AGGREGATE	H.W.	HOT WATER	CRNG	CORNER	STR	STRUCTURAL
80	AGGREGATE	AGR	AGGREGATE	H.W.	HOT WATER	CRNG	CORNER	STR	STRUCTURAL
81	AGGREGATE	AGR	AGGREGATE	H.W.	HOT WATER	CRNG	CORNER	STR	STRUCTURAL
82	AGGREGATE	AGR	AGGREGATE	H.W.	HOT WATER	CRNG	CORNER	STR	STRUCTURAL
83	AGGREGATE	AGR	AGGREGATE	H.W.	HOT WATER	CRNG	CORNER	STR	STRUCTURAL
84	AGGREGATE	AGR	AGGREGATE	H.W.	HOT WATER	CRNG	CORNER	STR	STRUCTURAL
85	AGGREGATE	AGR	AGGREGATE	H.W.	HOT WATER	CRNG	CORNER	STR	STRUCTURAL
86	AGGREGATE	AGR	AGGREGATE	H.W.	HOT WATER	CRNG	CORNER	STR	STRUCTURAL
87	AGGREGATE	AGR	AGGREGATE	H.W.	HOT WATER	CRNG	CORNER	STR	STRUCTURAL
88	AGGREGATE	AGR	AGGREGATE	H.W.	HOT WATER	CRNG	CORNER	STR	STRUCTURAL
89	AGGREGATE	AGR	AGGREGATE	H.W.	HOT WATER	CRNG	CORNER	STR	STRUCTURAL
90	AGGREGATE	AGR	AGGREGATE	H.W.	HOT WATER	CRNG	CORNER	STR	STRUCTURAL
91	AGGREGATE	AGR	AGGREGATE	H.W.	HOT WATER	CRNG	CORNER	STR	STRUCTURAL
92	AGGREGATE	AGR	AGGREGATE	H.W.	HOT WATER	CRNG	CORNER	STR	STRUCTURAL
93	AGGREGATE	AGR	AGGREGATE	H.W.	HOT WATER	CRNG	CORNER	STR	STRUCTURAL
94	AGGREGATE	AGR	AGGREGATE	H.W.	HOT WATER	CRNG	CORNER	STR	STRUCTURAL
95	AGGREGATE	AGR	AGGREGATE	H.W.	HOT WATER	CRNG	CORNER	STR	STRUCTURAL
96	AGGREGATE	AGR	AGGREGATE	H.W.	HOT WATER	CRNG	CORNER	STR	STRUCTURAL
97	AGGREGATE	AGR	AGGREGATE	H.W.	HOT WATER	CRNG	CORNER	STR	STRUCTURAL
98	AGGREGATE	AGR	AGGREGATE	H.W.	HOT WATER	CRNG	CORNER	STR	STRUCTURAL
99	AGGREGATE	AGR	AGGREGATE	H.W.	HOT WATER	CRNG	CORNER	STR	STRUCTURAL
100	AGGREGATE	AGR	AGGREGATE	H.W.	HOT WATER	CRNG	CORNER	STR	STRUCTURAL

NOT TO SCALE



PROJECT: **Point Pinos Lighthouse Restoration**
 CITY OF PACIFIC GROVE

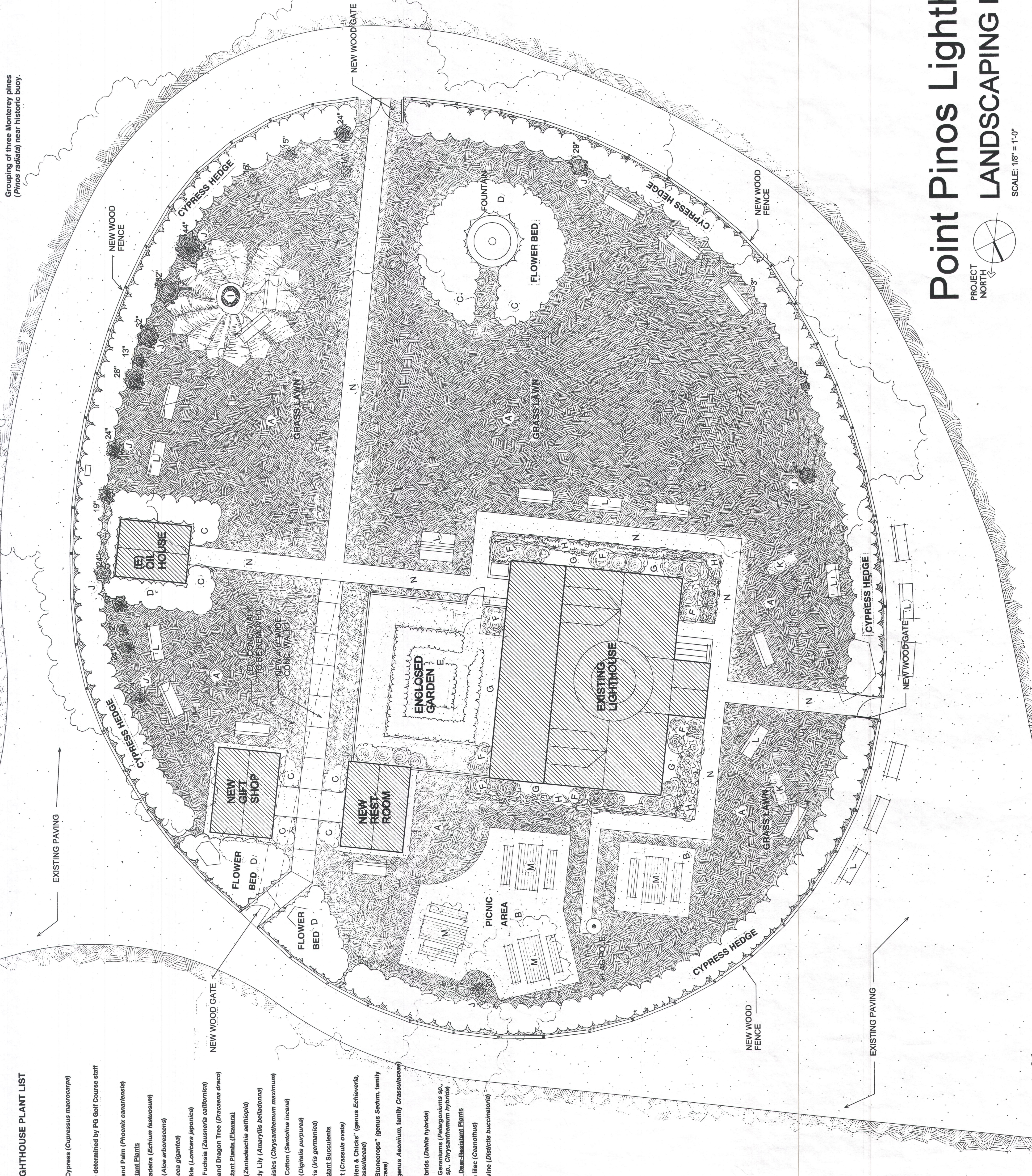
DATE: MAY 19, 2010
 REVISIONS: 6-17-2010
 8-10-2010

DRAWN BY: JEFF BROWN

SHEET TITLE: SITE PLAN

SHEET: 1

Grouping of three Monterey pines
 (*Pinus radiata*) near historic buoy.



PT. PINOS LIGHTHOUSE PLANT LIST
 (partial):

- Cypress Hedge
- a Monterey Cypress (*Cupressus macrocarpa*)
- Lawn
- b Type to be determined by PG Golf Course staff
- Palm Tree
- c Canary Island Palm (*Phoenix canariensis*)
- Large, Deer-Resistant Plants
- d Pride of Madeira (*Echium fastuosum*)
- e Tree Aloe (*Aloe arborescens*)
- f Yucca (*Yucca gigantea*)
- g Honeycuckle (*Lonicera japonica*)
- h California Fuchsia (*Zauschneria californica*)
- i Canary Island Dragon Tree (*Dracaena draco*)
- Small, Deer-Resistant Plants (Flowers)
- j Calla Lily (*Zantedeschia aethiopis*)
- k Naked Lady Lily (*Amaryllis belladonna*)
- l Shasta Daisies (*Chrysanthemum maximum*)
- m Lavender Cotton (*Senecio linaresis*)
- n Foxglove (*Digitalis purpurea*)
- o German Iris (*Iris germanica*)
- Small, Deer-Resistant Succulents
- p Jade Plant (*Crasulula ovata*)
- q Various "Hen & Chicks" (genus *Echeveria*, family *Crasulaceae*)
- r Various "Stonecrop" (genus *Sedum*, family *Crasulaceae*)
- s Various (genus *Aeonium*, family *Crasulaceae*)
- Dahlia Garden
- t Dahlia Hybrids (*Dahlia hybrida*)
- u Common Geraniums (*Pelargonium* sp., *Dianthus* sp., *Chrysanthemum hybrida*)
- Additional Large, Deer-Resistant Plants
- v California Lilac (*Ceanothus*)
- w Trumpet vine (*Dioscorea buccinatoria*)

PT. PINOS LIGHTHOUSE LANDSCAPING GOALS:
 Using archival information, identify the primary garden design elements to create the look and feel of the Lighthouse garden from the turn of the 20th century to the beginning of World War II. This landscape will involve plants that are still in place, those that can be identified as being in place in the past, and those that probably would have been used in gardens during that period of time. The garden will not recreate one specific time but rather borrow elements from several eras in order to accommodate the many visitors, the interpretive program and the many activities planned for the facility.

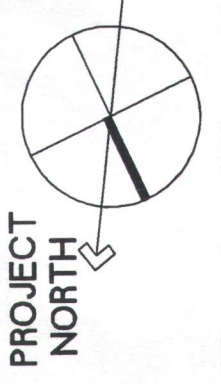
PT. PINOS LIGHTHOUSE LANDSCAPING NOTES:

- 1 The primary landscape design elements—including the wooden fence, cypress hedge, planting beds, lawn, fountain, dahlia garden, palm tree, walkways and Coast Guard gateway—will be recreated. The Pt. Pinos Lighthouse landscape as it appears in historic documents from the turn of the 20th century to the beginning of World War II.
- 2 Plant selections—both those plants still in place and those plants identified as new additions—are based upon recommendations by local horticulturalist Frances Grate and local botanist Vern Yador.
- 3 The landscaping will serve an interpretive historic role for Lighthouse visitors as well as the stage for various activities and events that are planned for the Lighthouse grounds.
- 4 New 42-inch high horizontal-board redwood fence to replicate historic fence.
- 5 New cypress hedge to replicate historic cypress hedge; prune to maintain a maximum height of 42 inches. Espalier to fence.
- 6 Irrigation system shall be designed and installed in consultation with the Pacific Grove Golf Course management and staff.
- 7 Types, locations, installation and maintenance of all plants within beds shall be determined in consultation with the Pacific Grove Golf Course management and staff.
- 8 Unfenced planting beds to be planted with deer-resistant foliage.
- 9 Type, location, installation and maintenance of all turf areas shall be determined in consultation with the Pacific Grove Golf Course management and staff.
- 10 Historic stone and concrete fountain to be repaired and restored to working order.
- 11 New dahlia garden with deer-proof fence to replicate historic dahlia garden and fence.
- 12 Existing concrete walkways eventually are to be replaced with new 4-foot wide ADA-compliant concrete walkways.
- 13 Redwood gateway to replicate historic "Coast Guard" gate at parking lot.
- 14 New ADA-compliant bathroom structure to replicate historic outbuilding.
- 15 New ADA-accessible gift shop structure to replicate historic outbuilding.
- 16 No planting or watering allowed within 3 feet of the base of the Lighthouse.

LANDSCAPE LEGEND:

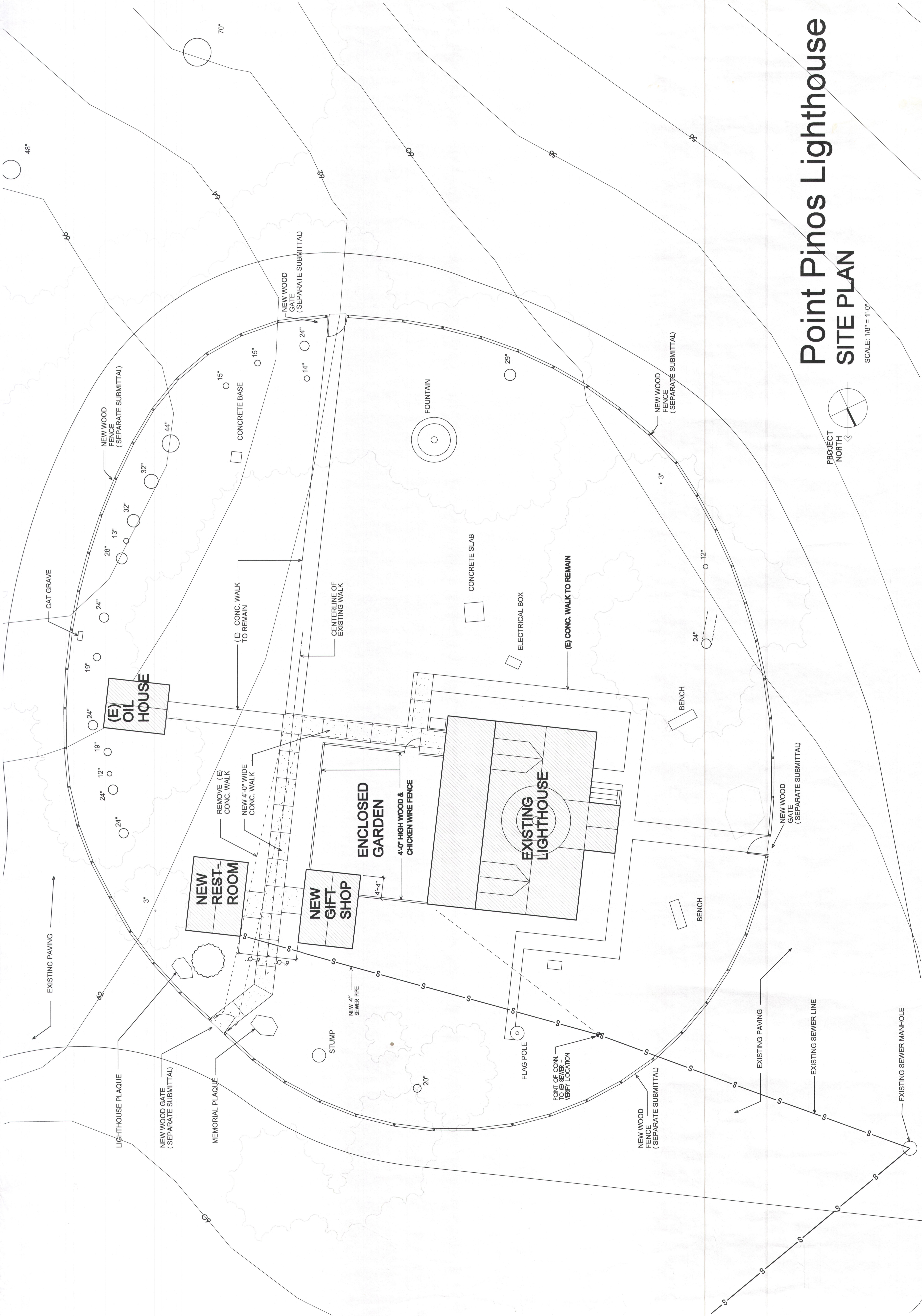
- A Grass Lawn
- B Picnic Area Atop Decomposed Granite Area
- C Flower Bed with Deer-Resistant, Small Plants
- D Flower Bed with Deer-Resistant Large Plants
- E Dahlia Garden with Deer-Proof Fence
- F Succulents in Clay Pots
- G Pea Gravel Over French Drain
- H Succulent Planting Bed
- I Palm Tree
- J Existing Cypress Tree
- K Existing Bench (to be removed)
- L New Memorial Bench
- M New Picnic Table and Benches
- N Existing Concrete Walkway

Point Pinos Lighthouse
 LANDSCAPING PLAN



SCALE: 1/8" = 1'-0"

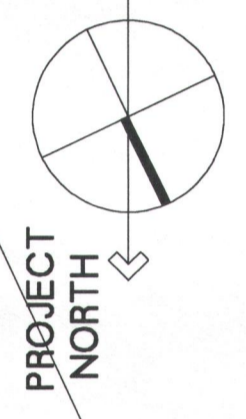
LANDSCAPE PLAN
Jan 4 2015

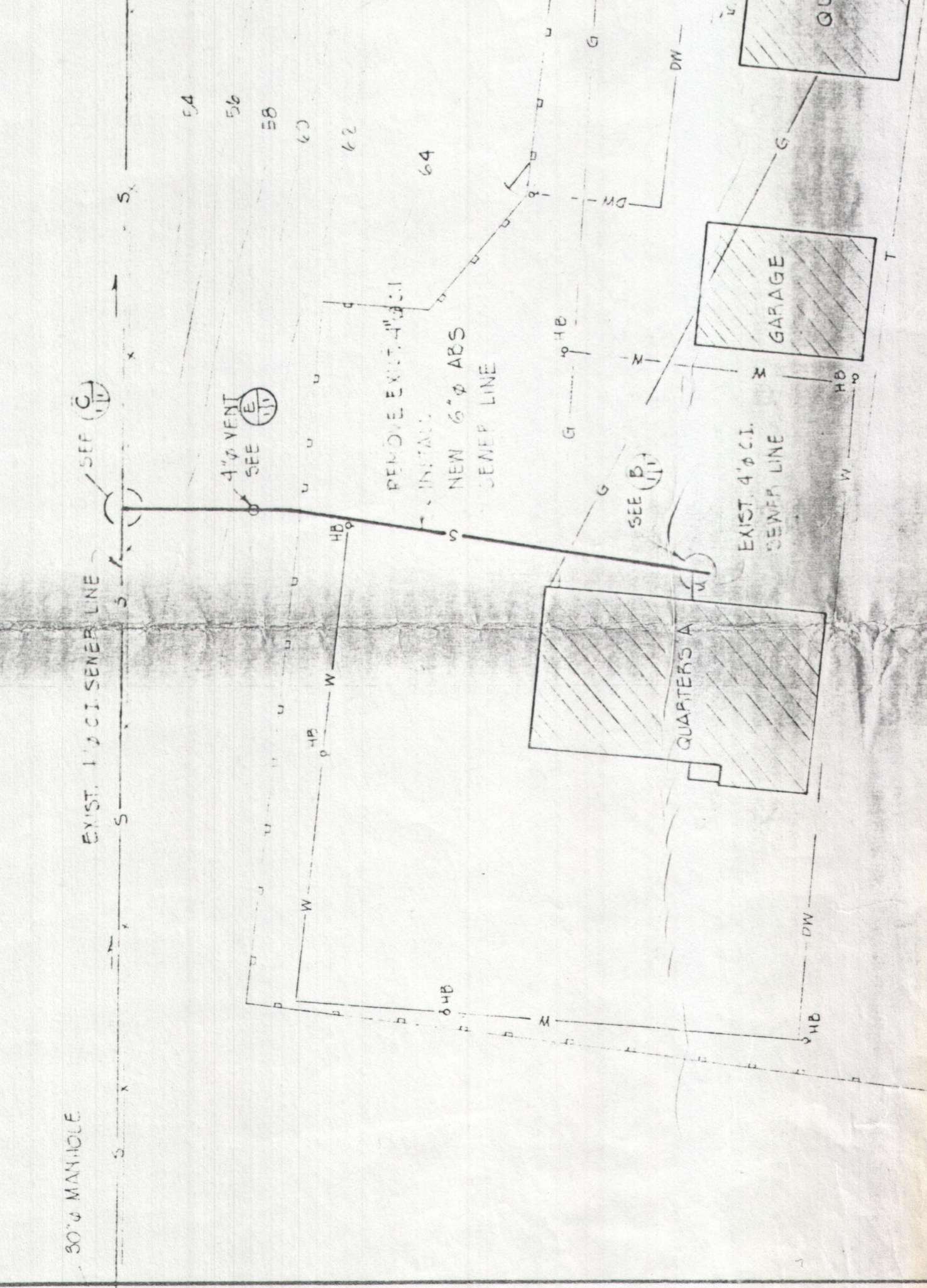
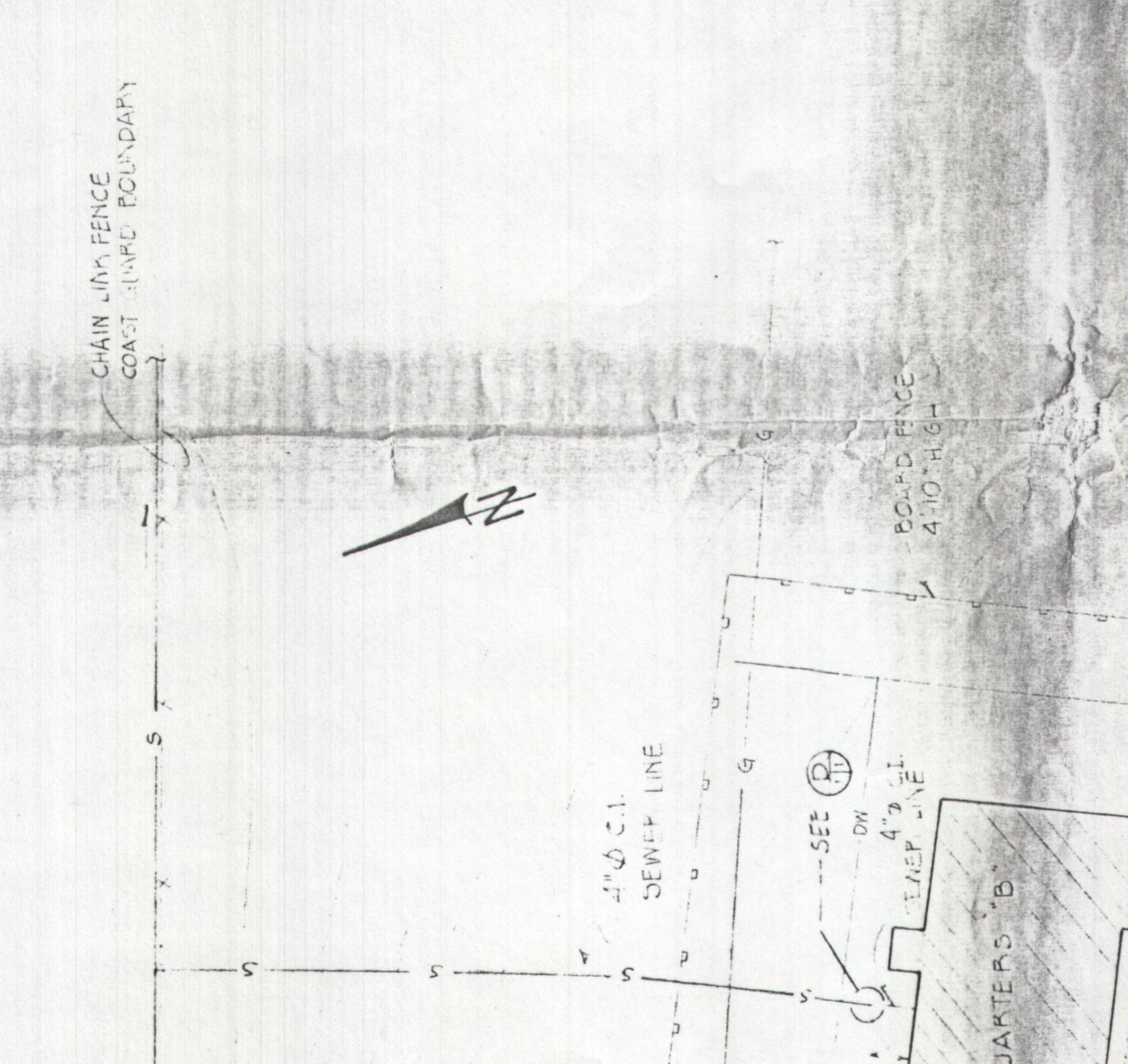
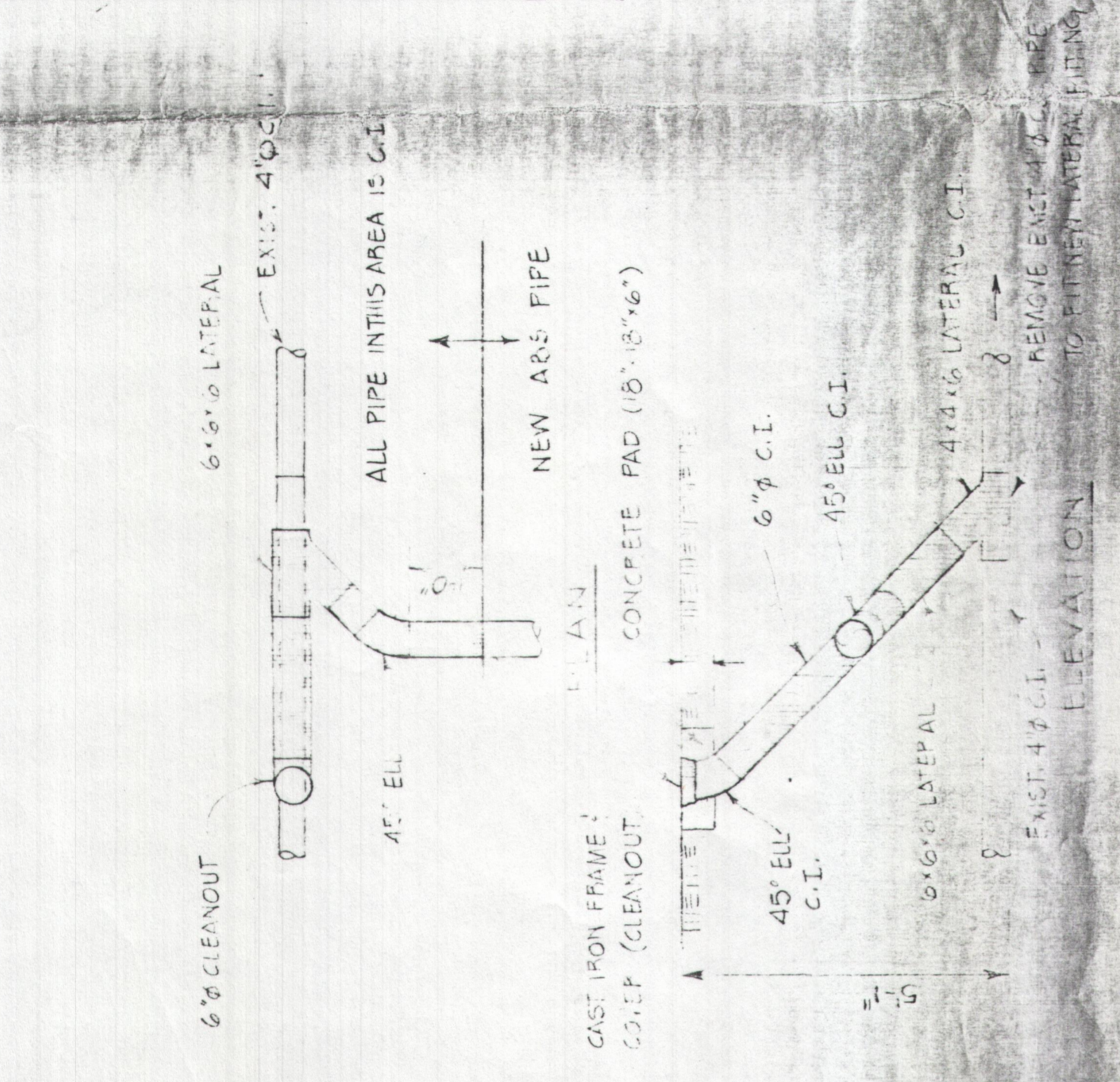
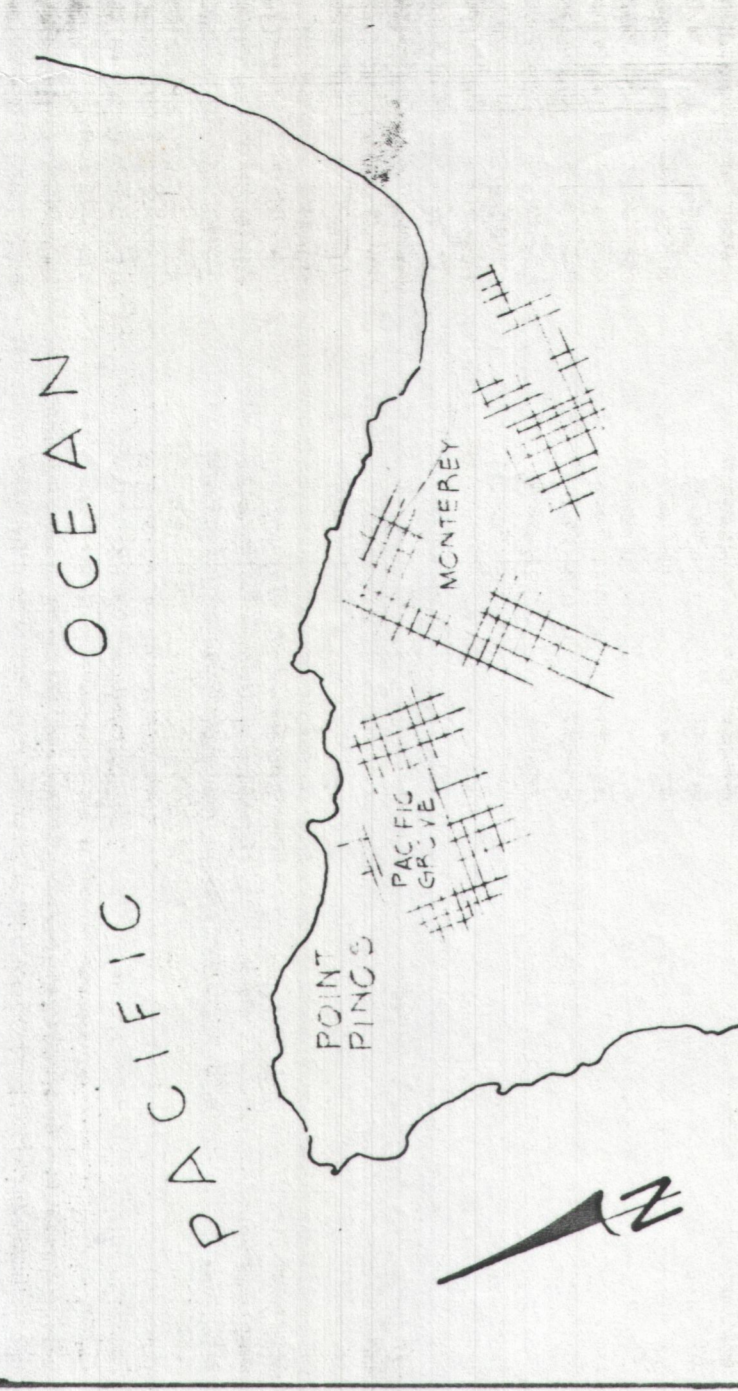


Point Pinos Lighthouse

SITE PLAN

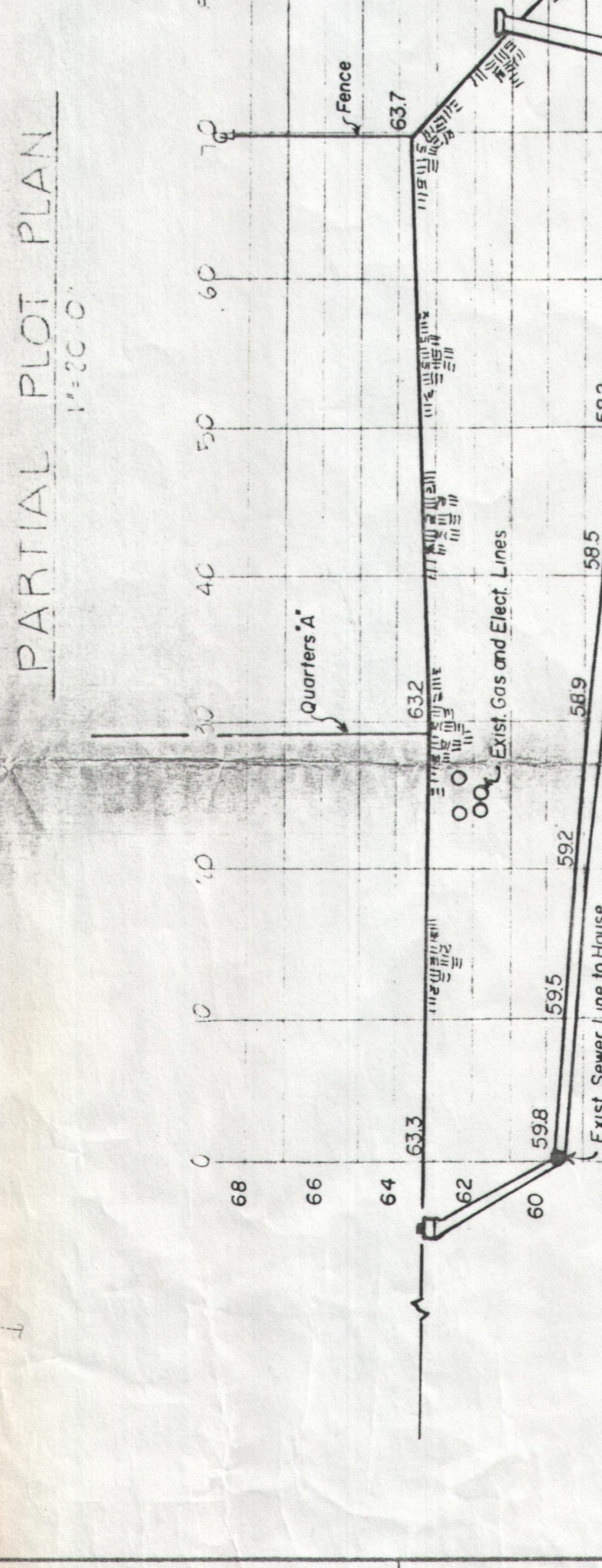
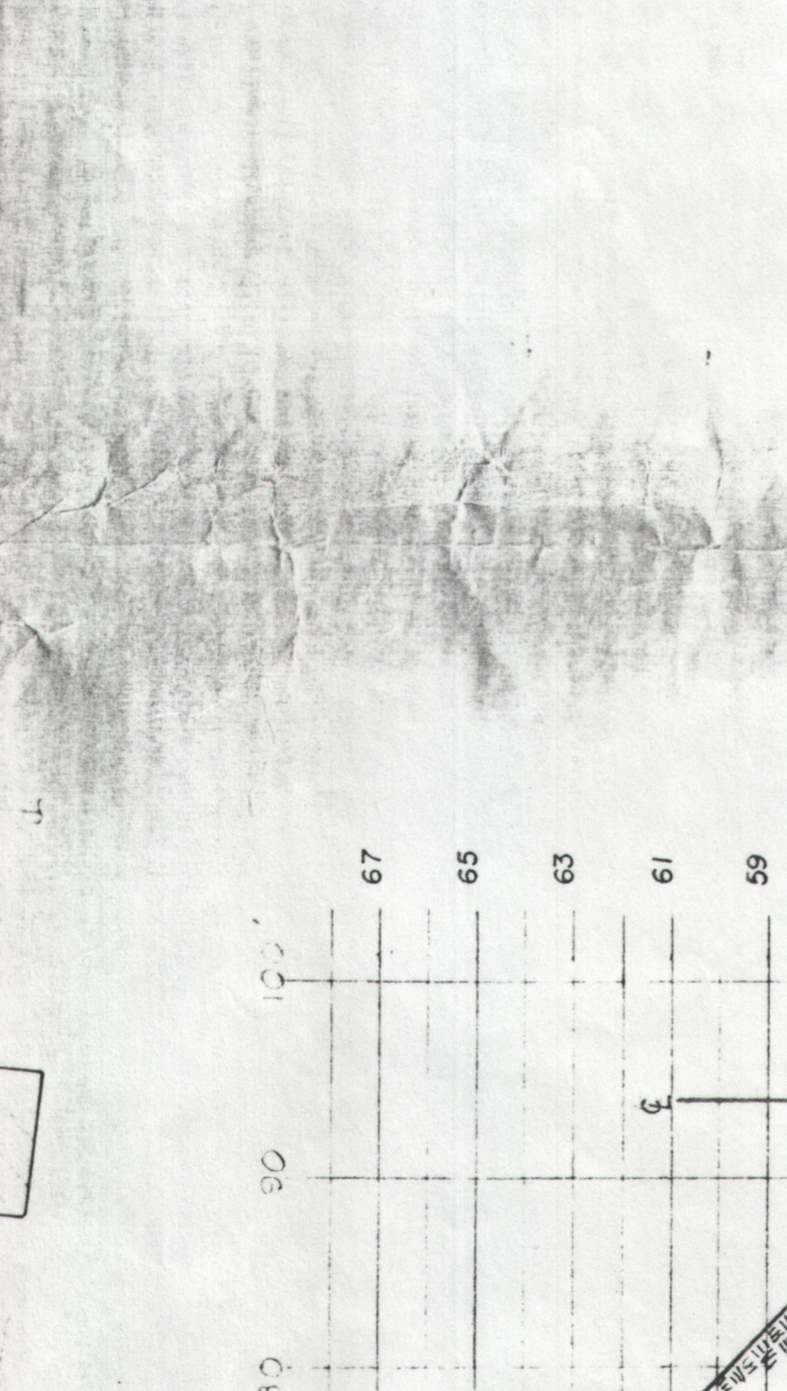
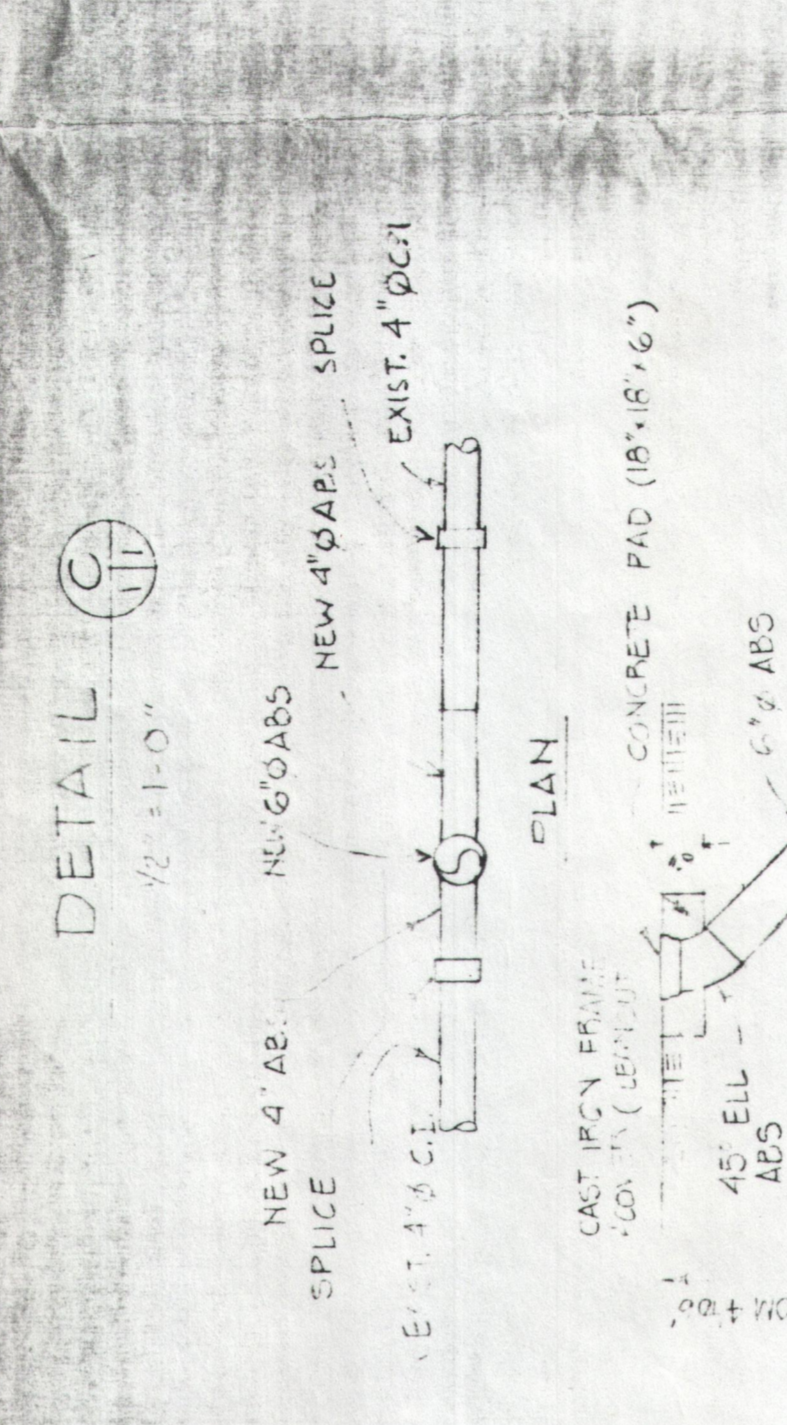
SCALE: 1/8" = 1'-0"



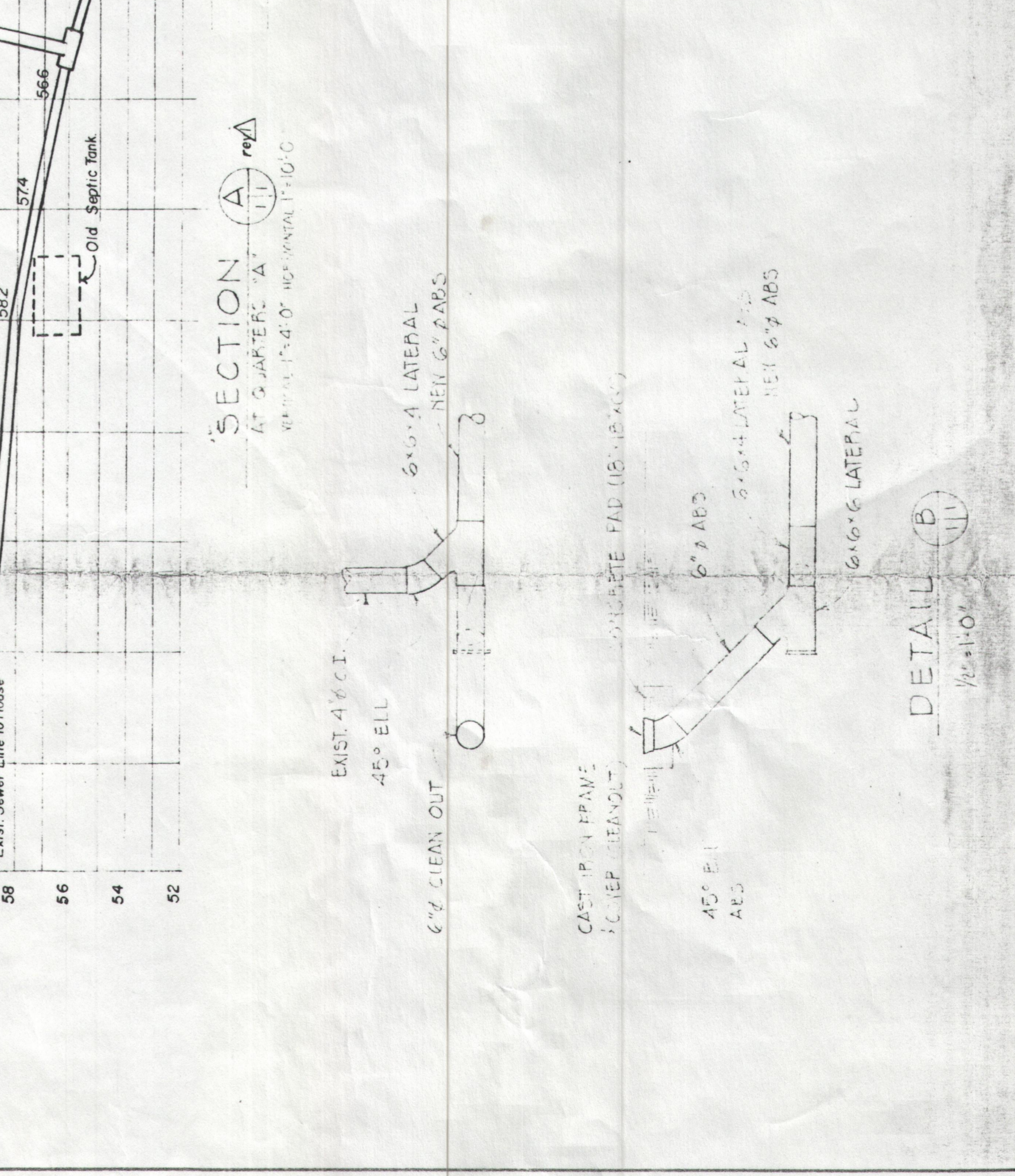
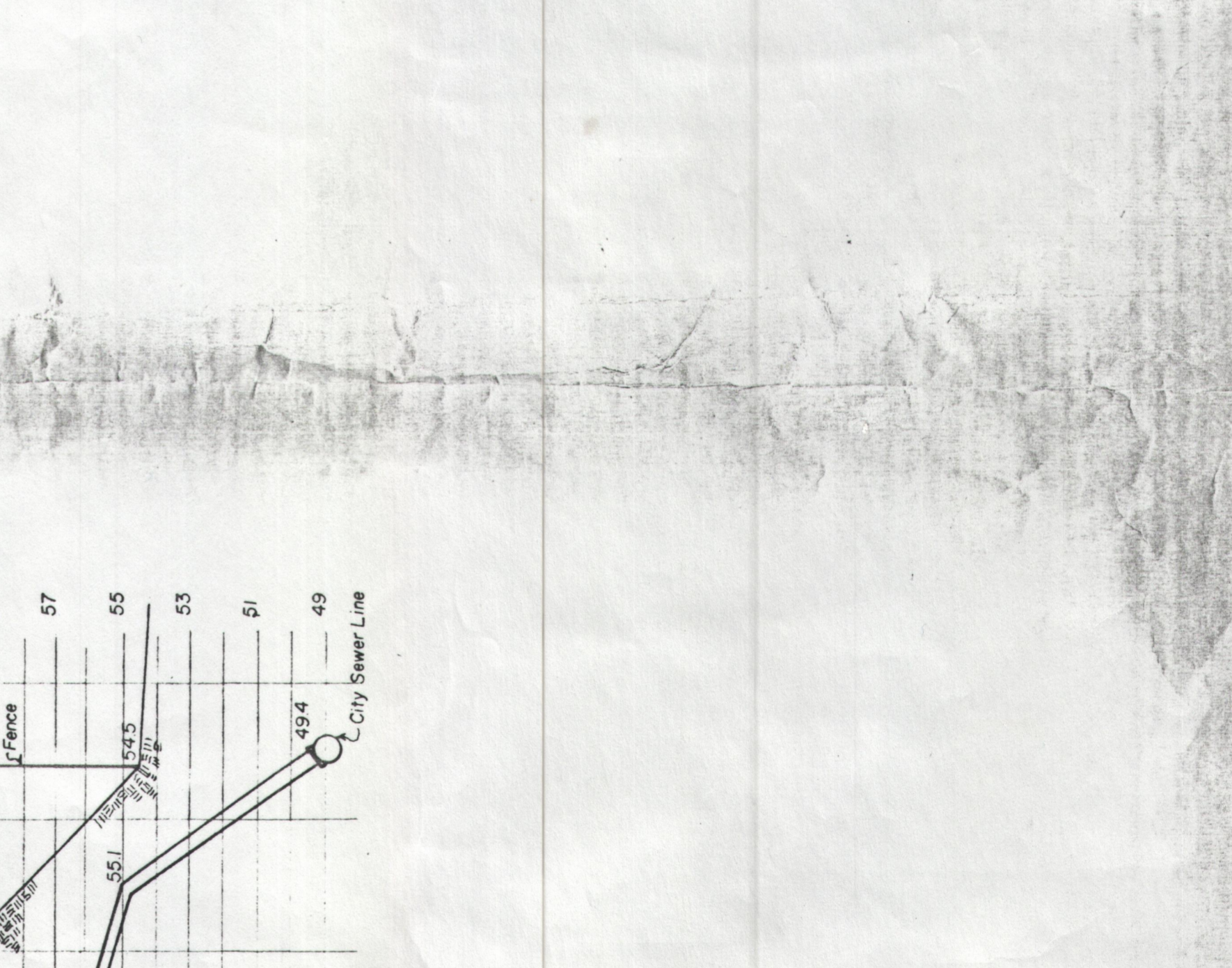
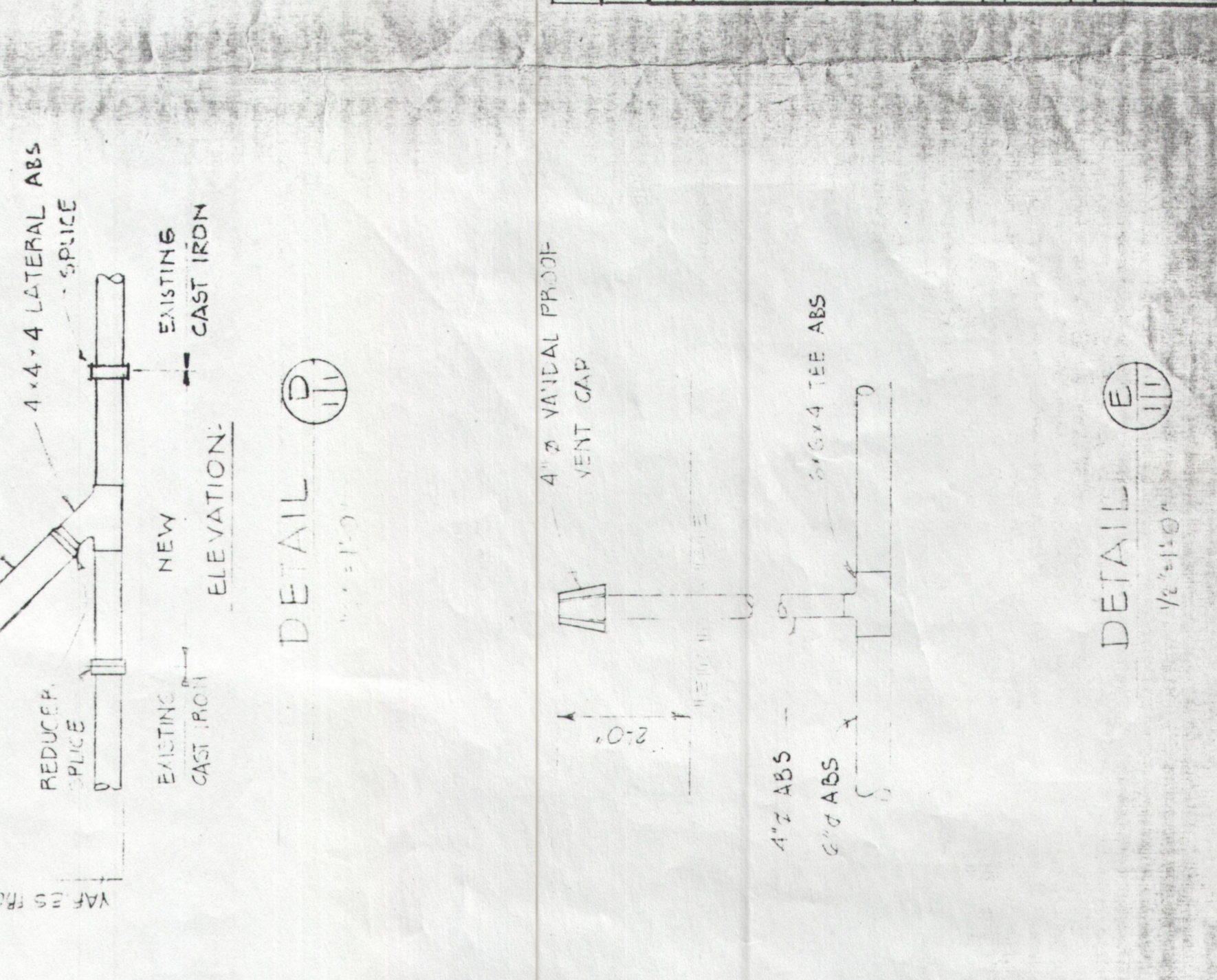


NOTE:

1. WHERE NECESSARY TO COMPLY WITH APPLICABLE SAFETY REGULATIONS, TRENCHES AND OTHER EXCAVATIONS SHALL BE PROPERLY SHIELDED AND BEACED TO FURNISH SAFE AND ACCEPTABLE WORKING CONDITIONS, COMPLY WITH OSHA 5-D ART. 16.
2. ABS PIPE AND FITTINGS SHALL BE STANDARD STRENGTH ASTM C13.
3. CAST IRON PIPE AND FITTINGS SHALL BE ASTM A14.
4. INSTALL ALL PIPE ACCORDING TO ASTM C-12.
5. BACKFILL TRENCHES WITH EXCAVATED MATERIAL TO 85% DENSITY AS PER ASTM D-1557 C.
6. REPLANT DESTROYED VEGETATION.
7. REBUILD FENCE SECTIONS THAT WERE REMOVED FOR TRENCHING.
8. ALL UTILITY LINES SHOWN ARE APPROXIMATE.



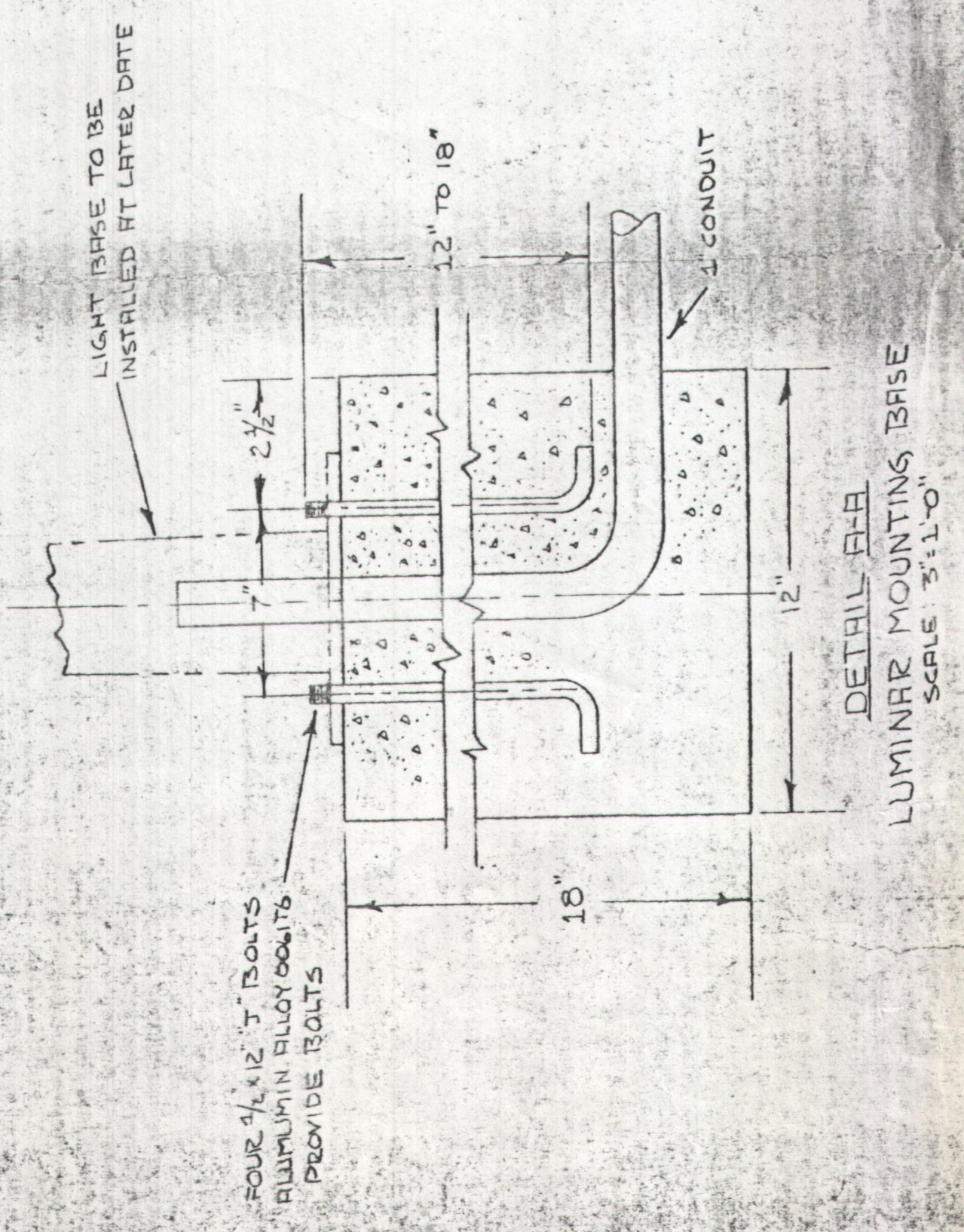
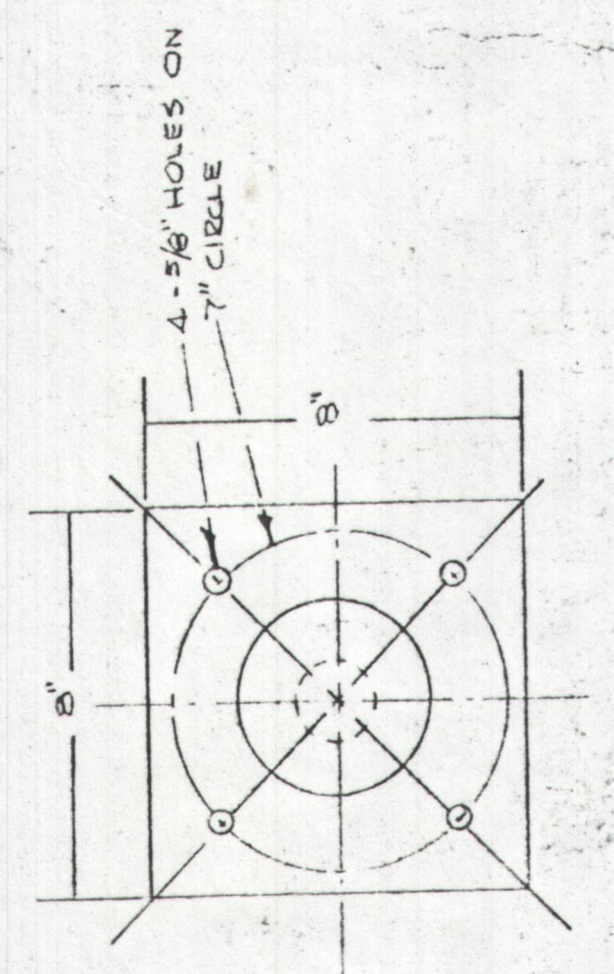
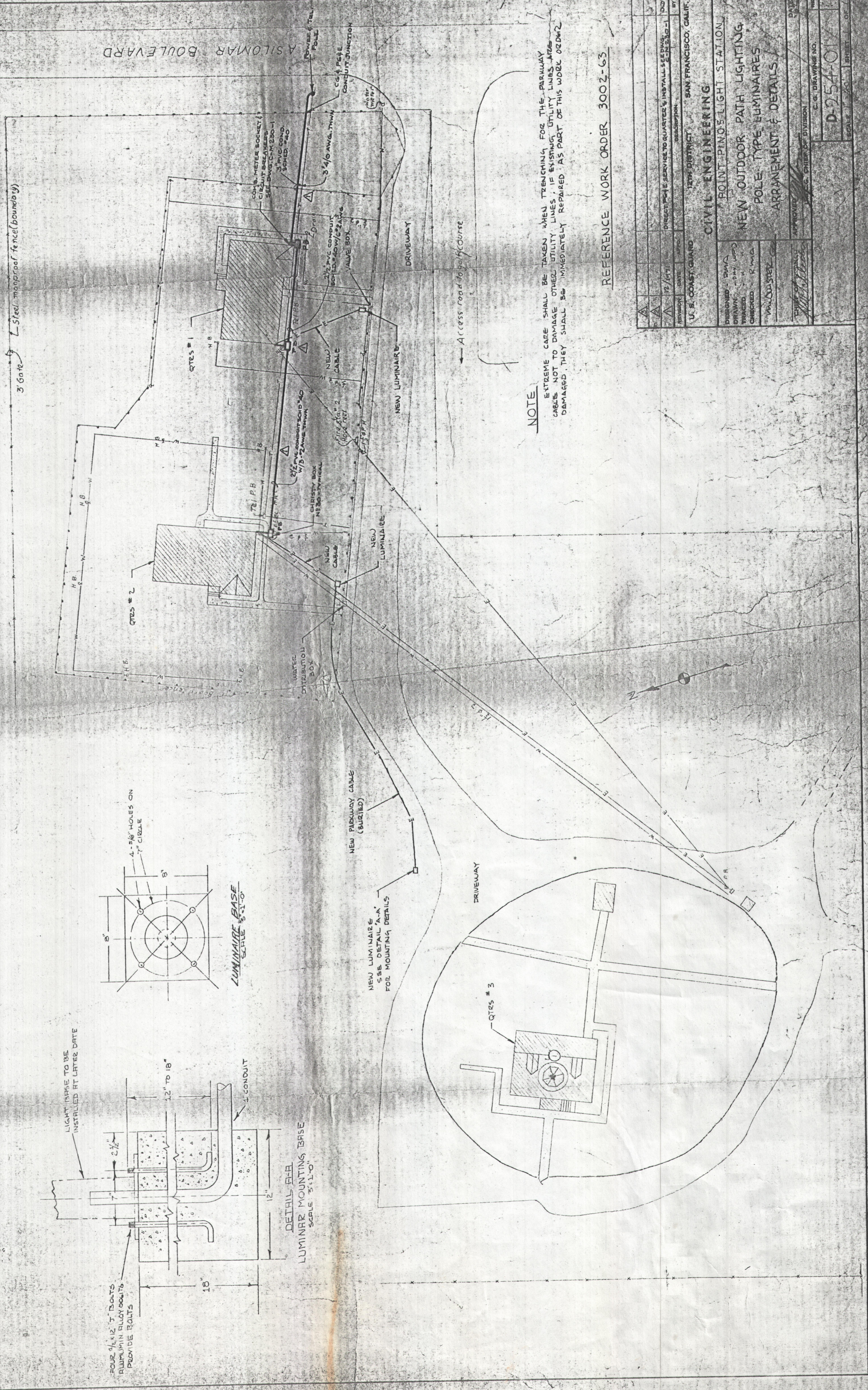
DATE	10/17/77	BY	PS
REV.		DESCRIPTION	SECTION REDRAWN AS SURVEYED
DESIGNED BY	PS	U.S. COAST GUARD	12 TH DISTRICT SAN FRANCISCO, CA.
DRAWN BY	PS	ENGINEERING	
CHECKED BY		POINT PINOS LIGHT/HOUSING	
REVIEWED BY		NEW SEWER LINE	
PROJECT MANAGER		APPROVED:	DATE
REVIEWED BY		McAUSTIN (acting)	30 Sept 77
REVIEWED BY		CHIEF OF SECTION	DRAWING NUMBER
TECHNICAL ASSOC.			D-1740
			SCALE: AS SHOWN
			SHEET 1 OF 1



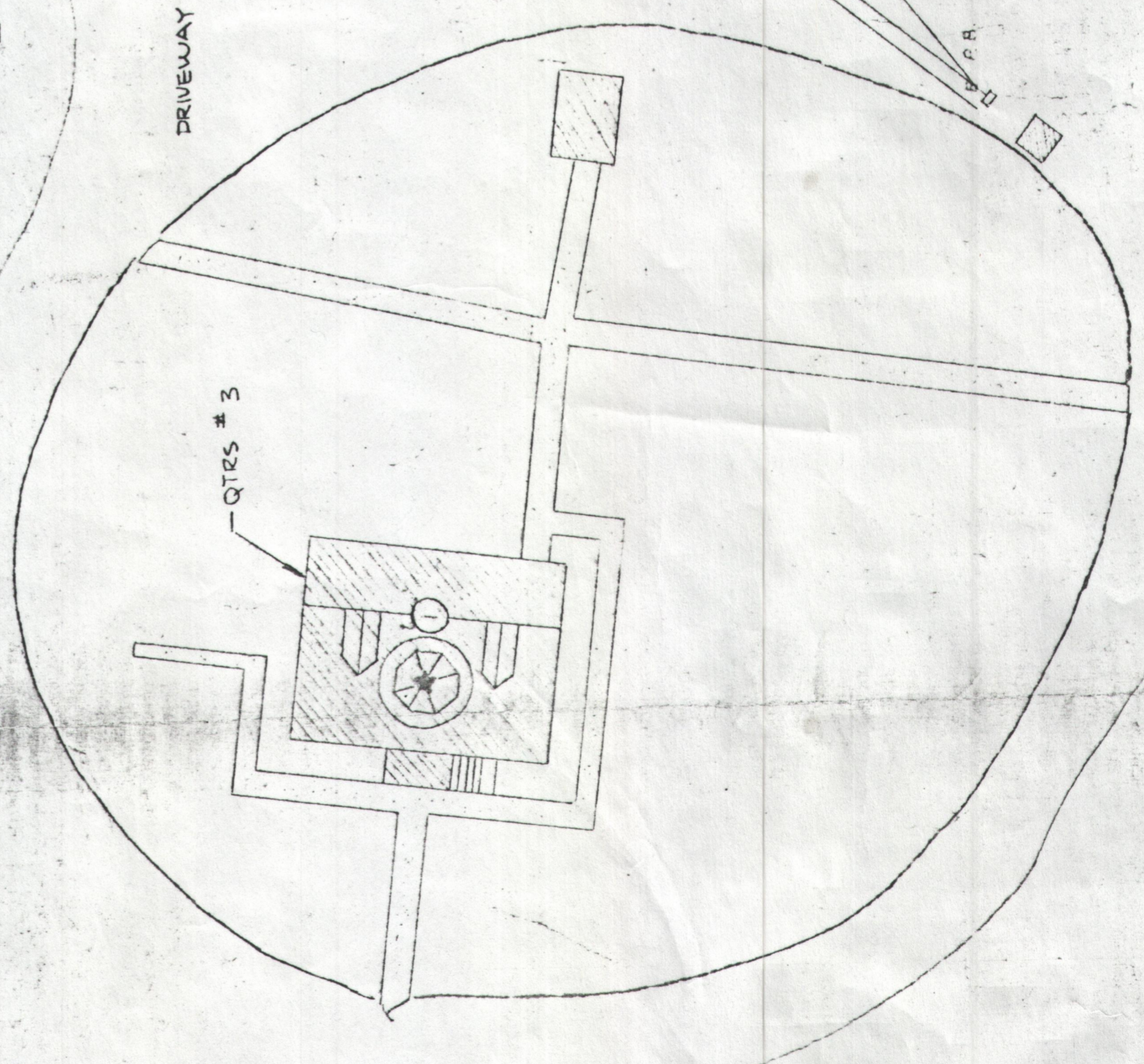
11/76 QTS 2 = A

11/76 QTS 1 = B

3 Gate L Steel monopole fence (boundary)



NEW LUMINAIRE SEE DETAIL A-A FOR MOUNTING DETAILS



NOTE

EXTREME CARE SHALL BE TAKEN WHEN TRENCHING FOR THE PARKWAY CABLES NOT TO DAMAGE OTHER UTILITY LINES. IF EXISTING UTILITY LINES ARE DAMAGED THEY SHALL BE IMMEDIATELY REPAIRED AS PART OF THIS WORK ORDER.

REFERENCE WORK ORDER 3002-63

NO.	DATE	DESCRIPTION	BY
1	12/1/51	DIRECT POLE SERVICE TO QUARTER 4, INSTALL 5 E.P. 250-1	DD
2			
3			
4			
5			
6			
7			
8			
9			
10			
11			
12			
13			
14			
15			
16			
17			
18			
19			
20			
21			
22			
23			
24			
25			
26			
27			
28			
29			
30			
31			
32			
33			
34			
35			
36			
37			
38			
39			
40			
41			
42			
43			
44			
45			
46			
47			
48			
49			
50			

CIVIL ENGINEERING
 POINT PINOCH LIGHT STATION
 NEW OUTDOOR PATH LIGHTING
 POLE TYPE LUMINAIRES
 ARRANGEMENT & DETAILS

U.S. COAST GUARD 12TH DISTRICT SAN FRANCISCO, CALIF.
 DESIGNED: DWA
 DRAWN: JHY
 CHECKED: FMA
 APPROVED: [Signature]
 C. G. DRAWING NO. D-254-01
 SCALE: 1"=20' SHEET 01

21/39